

Dearne Valley
College

FUTURES FOR

Everyone

**COURSES AND
APPRENTICESHIPS**

2024/2025

THIS IS Your Time

PRINCIPALS WELCOME

**DURING YOUR
TIME WITH US WE
WANT TO HELP
YOU ACHIEVE YOUR
ASPIRATIONS.**



Jason Austin

Jason Austin
CEO and Principal of RNN Group*

*RNN Group comprises of Rotherham College,
North Notts College and Dearne Valley College

Time is something we all have, but what it means to us and how we use it differs so much between us. It can mean time for ourselves, to grow, reflect, and develop skills. It can mean time for others, for socialising, making lifelong friendships, or caring for family. But no matter what our goals are, it takes time to achieve them. And we want your time with us to help you realise your aspirations.

We challenge you to achieve everything you want to do and will support you on your journey of life-changing learning. With us, you can spend your time wisely, putting your passion into practice in our first-rate facilities, all whilst being taught by our industry-experienced tutors. You'll be able to learn in environments that simulate the real world, on courses that have been designed in close collaboration with our wide network of local and regional employers.

Of course, College isn't just about 'studying'. During your time with us, you will benefit from access to enrichment programs, clubs, social action projects, and memory-making overseas trips. You can also make your voice heard by taking part in our Student Union.

How you use your time is one of the most important things you'll ever decide. We are so excited that you are considering spending it with us to take your next step on your learning journey.

STUDENTS WELCOME

**COLLEGE IS A
PLACE WHERE YOU
CAN PURSUE YOUR
PASSIONS AND
BUILD A BRIGHT,
HANDS-ON FUTURE.**



GET IN TOUCH

Dearne Valley College
01709 513355
learn@dearne-coll.ac.uk

At my local sixth form I decided that the courses weren't for me. They were teaching about topics that didn't interest me and in a way that doesn't suit my style of learning.

When studying for your GCSEs, you can feel like you're applying for courses that follow other people's expectations of you. But this is a time when you should continue discovering what makes you tick, and your path should be passion-led. Most importantly, it should be a choice that you make.

When I started studying at College, it completely validated my decision to go hands-on instead of sixth form. It's a learning atmosphere unlike anything I've experienced; from the tutors to your classmates, everyone is so supportive and wants to be there. You're treated like an adult, which helps you mature and grow your self-confidence.

I've grown so much as a person - whether it's my technical skills or more how I feel about myself and interact with the world. **I encourage you to find out more, and maybe even attend an Open Event; I did, and one of the helpful students I spoke to there is now a close friend!**

College for me is one of the best decisions I ever made, and I hope it will be for you too.

Darcey Armstrong
Level 3 Student

Contents

WELCOME

We are Dearne Valley College	6-7
Your Typical Week	8-9
Your College Experience	10-11
Learner Experience	12-13
Sustainability	14-15
Wellbeing Support	16-19
Student Support	20-21
What Our Students Say	22-23

COURSES

Your Study Options	24-25
Course Levels Explained	26-27
Technical Courses	28-29
T Levels	29
Higher Technical Qualifications	30-31
What is an Apprenticeship?	32-33
Our Courses	34-111
Careers Index	112-113

GETTING TO COLLEGE

Travelling to College	114-115
Student Bus Service	116-117

OUR SITES

Commercial Outlets	118-121
Rotherham College	122-123
North Notts College	124-125
University Centre Rotherham	126-127
Bridge Skills Hub	128-129

APPLYING

How to Find Us	130-131
Open Events	132-133
How to Apply	134-135

WE ARE Dearne Valley College

YOUR CAMPUS

At Dearne Valley College, our purpose is to help you achieve your professional and personal goals.

All of the courses and apprenticeships we offer aim to provide students with the tools that they need in order to take their first step towards their dream career.

Located in Wath-upon-Dearne, less than 20 minutes from Rotherham Town Centre by bus, we specialise in providing our students with a career focused education. Our industry-specific courses are also designed with current and future career trends and technologies in mind, so that students can learn the most sought-after skills in their chosen industry and start their career one step ahead.

Students who study with us also have access to a range of industry-standard facilities. This includes our own onsite sports hall and gym facility, fully equipped with all the latest fitness technology. Students and staff are able to use these facilities, and have access to discounted memberships.

For more information about
Dearne Valley College, please
visit dearne-coll.ac.uk

STUDY WITH US

Our courses include a variety of levels to suit all abilities - from entry-level to degree-level - as well as a range of apprenticeships.

Choose from a wide range of subjects including:

- Animal Care
- Construction (Joinery, Plastering and Bricklaying)
- English and Maths
- Esports
- FLEX - Dedicated department for students with Special Educational Needs
- Hair and Beauty
- Health and Social Care
- Land-based Industries
- Motor Vehicle
- Public Services
- Sport

YOUR FACILITIES

We pride ourselves on investing in your future. All of our courses are delivered in industry-standard facilities with excellent equipment.

Our on-site Animal Care department houses many different species ranging from skinks to snakes, and meerkats to mice. We are also one of the only colleges in the UK to have our very own Armadillo.

At our Academy of Sport, you can really raise the bar by using facilities such as our on-site sports and fitness centre, multisport cages, AstroTurf pitches and the nearby Manvers boathouse and lake. Explore our newly built outdoor low ropes activity centre to practice team building skills and agility. You can also fuel your future in our state-of-the-art motor vehicle workshop housing hybrid and electric vehicles. You can also craft key skills in our workshops dedicated to trowel occupations, carpentry and joinery and plastering.

Outdoors, you can cultivate your land-based skills in our fantastic facilities including our 12-acre forest, polytunnels and more. Finally, brush up on your hair and beauty skills in our commercial salon Aspirations, by utilising your skills on paying customers.

Your time with us is about more than learning. We want you to enjoy your experience with us - whether this be through socialising with your new peers or being able to relax whilst you study, we have plenty of social spaces for you to do so.

HELPING YOU SUCCEED

Studying with us gives you industry specific skills for life that you can use within your future career.

By working with our extensive network of local and regional employers, we make sure that our courses give you the skills for success that businesses are looking for. Our professional networks also offer the opportunity for work experience and potential future employment.

Our talented teams of specialist tutors have worked, or still work, in the industry they teach. They bring a wealth of expert knowledge, breadth of experience and passion to their teaching. Whatever your area of interest, we have the facilities, expert tutors and professional links to help you succeed.



YOUR Typical Week

Charlotte Dent

Level 2 Childcare

"I love coming into College, because I get to meet new people, train for a job I love and I receive great support from the staff."

Time	Monday	Tuesday	Wednesday	Thursday	Friday
Morning	"I start my week off on placement at my local primary school. I work on placement two days a week."	"Tuesday is my second day of placement in the week. I tend to start at 8.30am and finish around 3.30pm."	"My Wednesday starts with an online English lesson from 9am - 10am, before our online Childcare lesson starts at 10.15am."	"On Thursdays, I start at 11.15am, so I normally do a couple of hours of coursework in the morning, before my maths lesson."	"Fridays are my busiest day as we have Childcare lessons from 9am - 4pm."
Afternoon	"Throughout the day I support the teachers in taking care of the children and ensure that the children are happy, well fed, and clean as they learn and develop through games and play."	"Whilst on placement I get to apply the knowledge I learn in College and most importantly get hands-on experience working with children - it's been so lovely getting an insight into my future career."	"I normally grab lunch in the College canteen with my friends before meeting with our Progress Tutor, as the last part of the day. Here we set academic targets, monitor progress and learn about things like mental health and wellbeing."	"At 1.15pm we have lunch and a short break before our Childcare lesson starts at 2pm."	"Throughout the day we'll learn about the units we're studying at the time, for example Safeguarding, Personal Hygiene or Human Rights and we'll also have a one-to-one session with our tutor to track our progress."
Evening	"After a long day of placement, I love just taking it easy with my friends, where we tend to go out for dinner."	"My flexible schedule at College allows me to take on more activities compared to secondary school. On Tuesdays I tend to volunteer at Barnardo's."	"After my PT session, I normally head home and catch up on some coursework for a couple of hours, then relax in front of the TV."	"With College finishing around 4, I try to do a few hours of volunteer work at Barnardo's before taking it easy at home."	"I like to socialise with friends, where we often go out for dinner, drinks or go for a long walk."

Take Pashley

Level 3 Health and Social Care

"The Health and Social care course has given me loads of knowledge and confidence. After finishing my course I am planning on going to University to study Psychology."

Time	Monday	Tuesday	Wednesday	Thursday	Friday
Morning	"My week starts off with a driving lesson on Monday morning, from 9.30am - 11.30am."	"Most of my Tuesday is spent volunteering at the charity shop, where I start my day at 10am and finish at 3pm."	"Wednesday is the day I've chosen as my independent study day, so I tend to spend about 4 - 6 hours working on coursework."	"On a Thursday, I am in College all day. I start at 9am and finish at 4pm, with plenty of breaks in between lessons."	"Similar to Thursdays, my Fridays are spent in College, where we're in from 9am to 4pm."
Afternoon	"After my weekly driving lesson I go to work at Sense Charity Shop, where I volunteer alongside my College work to gain experience for future work."	"At work I get to try my hand at loads of different jobs such as sorting, steaming and pricing new donations and working the tills."	"The work that we have varies throughout the year, but a lot is preparing for Thursday's and Friday's lessons and making sure I'm all caught up."	"All of my lessons on a Thursday are related to my course, where we mostly cover the academic side, but also spend time in the Clinical Skill Suites, where we develop our hands-on knowledge related to patient care."	"Throughout the year we cover a lot of course units and cram a lot of great knowledge in. We'll learn about units such as Human Development, Reflective Practice, Physiology and my favourites; Psychology and Sociology."
Evening	"In the evening I will do an hour or so of coursework before playing computer games with my friends."	"I like keeping up with the latest films, so after volunteering I like to go to the cinema in the evening, either with my friends or family."	"After a whole day of College work, my grandad usually takes me out for a few hours of driving to get the practice in before my test."	"Thursdays tend to be full-on, so after College, I like to just head home and relax in front of the TV."	"On a Friday, me and my friends love to have a video-game night where we unwind from the week, play loads of games and eat pizza."

YOUR College Experience

STUDYING AT COLLEGE CAN BE AN EXPERIENCE LIKE NO OTHER.

We provide plenty of opportunities to try new things, and most importantly have fun. At College you'll have more freedom, learn new skills and build friendships to last a lifetime.

BECOME A STUDENT AMBASSADOR

As a college student, you'll have a lot more free-time on your hands. Now's the perfect time to enhance your CV and lend a hand as a student ambassador.

As an ambassador, you get paid to help out at College Open Events, give tours and go out to local schools to speak to potential students. Becoming a student ambassador will not go unnoticed to future employers.

ENJOY HEARING FROM GUEST SPEAKERS

As well as being taught by top-class tutors, throughout the academic year you'll have the chance to hear from guest speakers from industry professionals who work for some of the top organisations in their field and help provide you with a unique insight into your future profession.

ENRICHMENT

Make the most of your free time and meet friends for life with our fun extracurricular activities, including cross college sports days, World Skills UK competitions, charity events, fun runs, book clubs and much more, such as:

- College sports days and inter college sports competitions
- World Skills UK Competitions
- Fitness classes
- Charity Events
- Fun runs
- Sports clubs including football and rugby
- Book Clubs supported by the Library
- Gym sessions
- Preparation for Life including personal budgeting, building positive relationships
- Football club
- LGBTQ+ club
- Environment and sustainability Group
- Gaming
- Warhammer
- Pilates/Yoga
- Social table tennis
- Performing arts
- Movie Club
- Debate sessions
- Community Champion club



Tabletop Gaming Club

INDUSTRY PLACEMENTS

We work closely with businesses across the region to not only develop our curriculum and facilities, but also to help you get your foot in the door. Through our industry placements you can start climbing the career ladder and gain invaluable experience - perfect for building your CV.

ERASMUS/TURING SCHEME

Another important part of your experience would be to be getting involved with our Erasmus scheme. This once in a lifetime opportunity is a voluntary scheme in which you would be able to travel abroad and participate in work experience to give you the knowledge and international experience of different cultures and workplaces.

This is an unforgettable experience to take part in. Previous placements have included Italy, Malta and Spain.

TRIPS AND EXCURSIONS

Off-campus learning is key to life at college. Whilst studying, you and your classmates will have the opportunity to go on exciting trips and excursions to businesses, attractions, universities and more. Former students have visited places such as St. George's Park, home to England's football team. They have also visited Wentworth Woodhouse, Manchester Airport and many, many more.



Learner Experience

GETTING STARTED IN SEPTEMBER

WELCOME WEEK

During our welcome week, you can find out more about the activities and enrichment opportunities available. If you find that we have not got something for you and your interests, visit the reception and they will put you in touch with the person who can help you get your interest or club up and running.

CAREERS ADVICE AND SUPPORT

Dearne Valley College has dedicated Careers lounges for you to seek advice, guidance and help throughout your time at college with your next step when you have finished your course or courses with us.

Expert staff can support you with plans, CV writing, cover letter writing, interview techniques and general careers guidance.



Sustainability

WORKING TOWARDS A GREENER FUTURE

Sustainability is central to how we operate at Dearne Valley College and the RNN Group, something that all staff and students contribute to.

We have to change the way we heat and power our buildings, and the way we run our business, to reduce our greenhouse gas emissions and to make our campuses a home for nature. As educators we have an added duty to teach our students about sustainability, in a place in which sustainability is commonplace.

THE SUSTAINABLE THINGS WE DO

As a Group, here is a list of the many actions we are taking to reduce our footprint:

ENERGY AND UTILITIES

The Group has a number of solar panels / solar heaters and wind turbines as well as a ground source heat pump at one college to produce clean energy, as well as capturing rainwater for use and moving to LED lights.

TRAVEL AND TRAVEL REDUCTION

We operate a number of Electric charging points and have a salary sacrifice scheme for bike users, bike boxes for secure cycle storage and shower facilities for bike users too.

Not only that, more meetings are conducted digitally to remove travelling between sites and there are hybrid working opportunities for most staff.

Our Transport provider Zeelo – the first global bus platform to offer 100% carbon neutral services – is committed to all-electric vehicles by 2030. Since September 2022 Zeelo have supported:

Saved 10.01 tonnes of CO2 (3.2Kg per rider) on RNN Group Bus Routes / Taken 2,853 car journeys off the road on RNN Group Bus Routes.

RECYCLING AND UPCYCLING

Our students run clothing rails across the Group for pre-loved clothing to be picked up by another learner and we use recycled wood, metal and plaster across our construction departments as well as recycling cardboard and paper.

ENVIRONMENT AND SUSTAINABILITY COMMITTEE

Our learners regularly talk about ways we can make things better.

GOOGLE REFERENCE COLLEGE

Through the use of Google Workspace for education, we have significantly reduced our printing which supports our journey to becoming more sustainable by reducing paper usage and energy.

GO LOCAL

We make a point of using local contractors and partners as our suppliers.

FLORA AND FAUNA

We support the 'No Mow May' and we have wildlife gardens, woodland management in operation, are part of the Big Schools Bird Watch and Dearne Valley College is a Hedgehog friendly campus.

PRINT AND PAPER

We now use non PVC banners and all our printed literature is FSC graded or recycled. We're also moving away from printing lots of guides in favor of using QR codes linked to our digital prospectus.



RNN GROUP SUSTAINABILITY

Designed by Student Gracie Firth.

“My logo design consists of a leaf in 4 sections, each representing the four colleges and university buildings in RNN Group. I hope that my logo can help staff and students to recognise environmental issues and how we can play a part in reducing them.”

Gracie Firth
Graphic Design Student

Wellbeing Support

WELLBEING IS AT THE HEART OF OUR COLLEGES AND VALUES

Dearne Valley College recognises and places a great importance on mental health awareness and wellbeing for all members of our community – both students and staff.

We have a dedicated Student Support Team at Dearne Valley College, who offer help and support to students who may be experiencing difficult/challenging times in their personal worlds.

Our Student Support Team offers Mentoring, Counselling, and Safeguarding.

PEOPLE SEEK OUR TEAM'S SUPPORT FOR MANY REASONS SUCH AS EXPERIENCING:

- Anxiety, stress and panic attacks
- Feeling overwhelmed in public settings
- Low mood
- Loss and bereavement
- Disturbing and unwanted thoughts and images
- Poor sleep
- Relationship difficulties
- Identity and Self-image issues
- Abuse/bullying
- Addictive behaviours (including substance abuse)
- Past trauma
- Troublesome repetitive behaviours
- Self-harming
- Frequent or troublesome issues with anger
- Concerns about living with physical illness/conditions
- Housing difficulties/problems at home
- Financial worries

MENTORING

Mentoring tends to be the first point of contact normally when accessing our team.

Mentoring offers:

- A safe space to offload, puzzle over, and work positively toward managing life issues and emotionally upsetting times
- Links to Health Support, Social Support and Primary/Secondary Care
- Practical support with housing and financial applications, and travelling to college issues
- Appropriate advocacy – when a learner may need support linking with other teams/organisations within college and sometimes with external agencies
- A place to discuss the possibility of a referral to counselling, if counselling has been requested or advised
- Safety and Welfare: Mentors and Welfare Officers will always work to keep students and the community safe and are all fully trained safeguarding staff
- Wellbeing advice including sexual health, self-care themes and self-help information

COUNSELLING

Counselling offers:

- Professional Counselling – all counsellors have professional membership and follow an ethical code of practice
- A safe, private and confidential space to explore often deeper, complex or more troublesome issues in a more methodical and structured way
- Various choices for the student/client to make in how their counselling process progresses and which methods/models work best for each individual (Tailored approach)
- The chance of developing a useful, positive and supportive relationship whilst working through concerns

SAFEGUARDING

You can contact the College Safeguarding Team (during college open hours) by:

- Contacting the team on safeguarding@rnngroup.ac.uk
- Ask for Safeguarding at the College reception desk
- Or call reception on 01709 513355 and ask for Safeguarding

Important! In a mental health crisis, at any time, day or night, you can:

- Contact the NHS Crisis Team on 0808 196 3779 – available to anyone in mental health crisis 24/7 anywhere across the South Yorkshire / Nottinghamshire area
- Call 111 (call 999 directly if emergency)
- Contact your GP
- Go directly to the nearest A&E (Emergency Department)

NATIONAL FREE COUNSELLING SERVICES AND TALKING SERVICES

KOOTH

Kooth is a free, safe and anonymous online chat and emotional wellbeing service for young people aged 11 to 25. This is a free Counselling Service.

www.kooth.com

QWELL

Free, safe and anonymous mental wellbeing support for adults across the UK.

This service is available from 18+

www.qwell.io

SAMARITANS

To speak to someone call: 116 123 (free from any phone)

www.samaritans.org/branches/rotherham

TOGETHERALL

Introducing Online Mental Health Support: Togetherall is a free online mental health support service.

Whether you're suffering from stress, are struggling to sleep or simply need someone to talk to, Togetherall can help you get support, take control and feel better.

You can get things off your chest in their anonymous global community, express yourself creatively and access a library of self-care resources – including clinical tests, tips and guided group courses with topics ranging from Managing Stress and Anxiety to Quitting Smoking. Trained professionals are online 24/7 to keep all members safe and provide extra support

IS MY IDENTITY PRIVATE?

On Togetherall you are totally anonymous to other members in the community and your personal information is kept secure while you are on the site.

Nobody will be informed if you've signed up to Togetherall or of your activity on the service unless they are seriously concerned about your safety whilst on campus.

HOW DO I CREATE A PROFILE?

Registering with Togetherall is quick and easy. Simply go to www.togetherall.com. Click the 'Join Us' button, select the option 'I'm from a University or College' and input your student email address.

You create an anonymised username and will be requested to provide information such as your age, gender, ethnicity, employment status and how you heard about Togetherall – you can prefer not to answer.

HOW DO I USE THE WEBSITE?

You can access Togetherall on any device with an internet connection. The home page has three options for you to explore:

COMMUNITY

Here you can see posts by other members of the online community and filter by categories (e.g. anxiety). You can also create your own posts for others to join in friendly and helpful discussion.

RESOURCES

This page has plenty of useful self-help features including interactive tools such as journals and self-assessments structure by standard NHS measures. You can also find clinically-established articles which highlight appropriate knowledge for anything you'd like to work on; these can be filtered by category.

COURSES

There are a variety of self-help courses which can be interactive with other Togetherall users. These courses share best practice on how to tackle that issue you're looking for help with. You'll be asked to take a self-assessment both at the beginning and end of the course. Courses are structured so that each section must be completed to unlock the next one.



DID YOU KNOW?

.....
All of our students have free access to Togetherall - an anonymous, online mental health support service. For more information scan the QR code or visit togetherall.com



Student Support

SAFEGUARDING AND SUPPORT SERVICES

Across all of our campuses we offer a range of services and support to help you with all aspects of student life as well as helping you overcome any difficulties.

Our Student Services, Safeguarding and Health and Wellbeing teams offer a series of services, including:

- Career and progression guidance
- In-class support
- Mental health and well-being support
- Enrichment activities and events
- Support and guidance on personal and welfare issues

If you would like additional learning support we have a dedicated team who can agree your tailored support plan to help you make the most of your college experience and reach your full potential. This includes:

- One-to-one support
- Access to assistive technologies
- Transition support
- Support with exams
- Specialist support team for SEND students

FINANCIAL SUPPORT

We have a number of support schemes available to take the financial pressure off, so you can enjoy your college experience and focus on your studies.

STUDENTS AGED 16-18

When starting a college course, students are not subject to any course fees and parents or carers will be eligible to claim benefits to help you out during your time at College.

Our dedicated Finance Team are here to help you throughout your studies. You can receive help with:

- Bursaries and course-related costs
- Travel passes
- Childcare queries
- Application queries

16-18 COLLEGE BURSARY

You may be eligible to receive a contribution towards costs including:

- Travel
- Equipment
- Uniform
- Meals

For more information speak to a Learner Finance Officer in Student Services.

STUDENTS AGED 19+

Students aged 19 and over may need to pay fees towards their education. These fees are based on the level of funding provided by the Government. Many adult students are entitled to financial support, please contact Student Services to find out if you are eligible. You may be eligible to receive support including:

- Advanced Learner Loans
- Travel costs
- Childcare costs
- Awarding body and tuition fees
- Other associated study costs



CONTACT US

DEARNE VALLEY COLLEGE

For more information about student support, please visit the Information tab on dearne-coll.ac.uk or contact us directly on 01709 513355 or learn@dearne-coll.ac.uk

What our Students Say



“Returning to education at Dearne Valley College has given me the skills to progress to study at University in 2024. The atmosphere and the learning environment is fantastic.”

Toni Emery

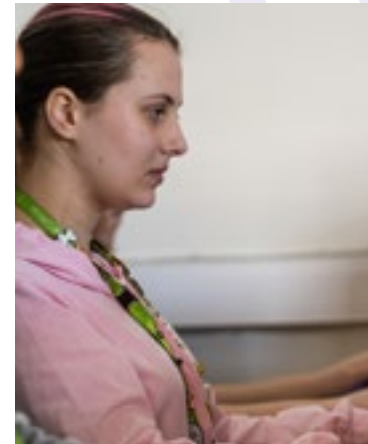
HE - Health Science Professions
Adult Learner

“I love the social aspect of college and taking part in activities. After I complete my course I plan to study electrics to further my skill set. ”



Jack Hinkles

Level 2 - Plastering
Former student at Swinton Academy



“My tutors are brilliant and have given me the skills to progress to Level 3. I plan to study Games Design at university and take my skills to the next level.”

Freya Pearson

Level 3 - Esport
Former student at Astrea Academy
Dearne

“Dearne Valley College was a great choice for me with it being so local. I enjoy learning the bricklaying trade and I plan to start my career after my studies.”



Matthew Mount

Level 1 - Bricklaying
Former student at St Bernard's Catholic
High School

Your Study Options

Whether you're leaving school or returning to education, college is an exciting time filled with new experiences and gives you the freedom to choose your next step.

At Dearne Valley College we have a number of options for your post-16 choice including technical courses, T Levels and apprenticeships. You will acquire hands-on experience in a subject that interests you, allowing you to develop the industry skills and knowledge needed to begin a successful career.

Throughout this course guide your options will be explained to help you make an informed decision. If a number of options spark an interest, you can apply for more than one and you don't have to decide until you get your GCSE results in August which route you wish to take.

If you would like to discuss your options further get in touch with us on schoolevents@rnngroup.ac.uk

TECHNICAL COURSES

Technical courses are specialist courses focusing on one subject area. These courses come in a range of different course areas and provide you with all the practical skills and knowledge needed in your future career. On a technical course, you usually spend around three days-a-week studying your chosen course, with the rest of the time free to complete assignments, undertake work experience or pursue a hobby.

You may know technical courses as BTECs, NVQ and VRQs, with different courses available at a level to suit each student. More information can be found on page 28.

T LEVELS

T Levels are similar to technical courses, as they provide specialist training in a given area. The difference between the two is that T Levels include an in-depth industry placement that lasts at least 45 days. More information can be found on page 29.

APPRENTICESHIPS

An apprenticeship is a paid job where you will receive practical training and work alongside experienced staff. You will be in a real working environment, gaining employability skills and knowledge of an industry-sector.

As an apprentice, you'll work towards a nationally recognised qualification and typically spend four days a week in the workplace and one day a week at College.

Apprenticeships are competitive like any job so it's worth having a college course as a back-up option. More information on apprenticeships can be found on pages 30-31.



CASE STUDY

Bethany Byatt

HND Animal Management

“There is a wide variety of animals to care for and study. I enjoy coming to college as it's a friendly yet professional environment.”

Course Levels

EXPLAINED

Our courses are offered in a variety of different levels, we refer to them as **Introduction Skills (Entry Level 1 – Entry Level 3)**, **Level 1**, **Level 2** and **Level 3** courses.

Below is a table that explains what our typical entry requirements are, the course duration and what each level means to help you find a starting point.

YOUR EXAM RESULTS OR PREDICTED GRADES	YOUR STARTING POINT AT COLLEGE	TYPICAL DURATION	WHAT THIS LEVEL MEANS
5 GCSEs at grade 4 or above	T Levels	Two years	T Levels are a level 3 course which offer students a mixture of classroom learning and an industry placement of 315 hours (45 days). Equivalent to three full A-Levels.
OR			
A relevant Level 2 qualification	Level 3 course	A one or two-year course	Our Level 3 courses allow you to start to gain greater knowledge and learn advanced skills in your chosen industry.
	Level 3 Apprenticeship	Typically lasts 18 months to two years	A two-year Level 3 course is the equivalent of three full A-Levels.
4 GCSEs at grade 3 or above	Level 2 course	A one-year course	Our Level 2 courses allow you to specialise in your chosen industry.
OR			
A relevant Level 1 qualification	Level 2 Apprenticeship	Typically lasts one year	This provides a great foundation to build skills, knowledge and behaviours required for your chosen industry.
GCSEs at grade 2 or below	Level 1 course	A one-year course	Our Level 1 courses give you the chance to explore a range of areas within your chosen industry, helping you to progress to Level 2.
No GCSEs or pre-GCSEs	Introduction skills (Entry Level 1 – Entry Level 3 courses)	One-year per level	Our Entry Level courses introduce you to a subject area and are taught alongside other employability skills.

GRADING

Qualifications are now graded 9-1 rather than A*-G, with a grade 9 being the highest and grade 4 being an acceptable pass.

CURRENT GRADING STRUCTURE	FORMER GRADING STRUCTURE
9	
8	A*
7	A
6	
5	B
4	C
3	
2	D
1	E
	F
U	U

If you would like advice on what level is most suitable to you, please contact us on schoolevents@rnngroup.ac.uk

ENTRY REQUIREMENTS

If you haven't achieved GCSE maths and English at grades 4 or above you will undertake these qualifications alongside your main programme. In addition to qualifications, you should also have genuine interest in the area you wish to study.

The table on page 26 shows our typical entry requirements. Some courses have additional entry requirements, which are listed throughout this guide. You can also find more information on our college websites.

PROGRESSION

After completing a Level 3 qualification you could progress into employment, further training or Higher Education.

We have Higher Education courses ranging from Level 4 to Level 7 available at our college campuses and our dedicated Higher Education campus, University Centre Rotherham (UCR). This includes Foundation Degrees, HNCs, HNDs, BA/BSc Honours and more.

WHAT IS A Technical Course?

Technical courses are designed to help you to develop the skills and confidence to succeed in your chosen career. You will be taught by tutors with industry skills and experience and you'll learn in high-quality, purpose-built facilities that simulate a real working environment.

Technical courses at Level 3 are equivalent to A-Levels and are worth UCAS points, which means you can progress onto university after completion. They are mostly assessed by project work across the year and can involve some exams and tests depending on the qualification.



Vocational courses have many different names such as BTECs, NVQs (National Vocational Qualifications) and VRQs (Vocationally Related Qualifications) that are available at different educational levels.

Technical courses at Entry, Level 1 and Level 2 also help students develop their skills and move towards work or higher-level courses.

At College, students have lots of contact with employers and businesses through work experience, talks, visits or real-life projects. Graphic design and Photography students have recently created a series of designs for Wentworth Woodhouse to engage a younger audience to visit as well as having their work showcased at the We Wonder Noir festival.

Our students go on trips to bring their subjects to life. For example, Business, Retail and Tourism students went to Clifton Park Museum to complete their tour guiding and storytelling project as they guided staff around the museum and explained the history and origins of the site.

Students may also be involved in activities that develop skills of enterprise and entrepreneurship demonstrated by our games animation students, who hosted a games play fundraiser afternoon to raise money for Rotherham Hospital's Children's Ward.

As well as brilliant skill-developing activities, students also take part in fantastic competitions such as the yearly inter-college championship where Rotherham College and Dearne Valley College compete against Grimsby Institute in over 30 subject areas.

T-LEVELS

THE NEXT LEVEL QUALIFICATION

WHAT ARE T LEVELS?

We are delivering T Levels from September 2023 which offer students a mixture of classroom learning and an industry placement of 315 hours (45 days) where you will be fully integrated into the workplace.

T Levels are two-year technical programmes, designed with employers, to give young people the practical skills and knowledge that industries need. The 'T' stands for technical and they are an alternative to A-Levels. One T Level is equivalent to 3 A-Levels and will be assessed using a mixture of practical tasks, projects and exams.

We are currently offering T Levels in Animal Care. Please check our website for the latest information.



Higher Technical Qualifications

HIGHER TECHNICAL QUALIFICATIONS (HTQS) ARE SPECIALIST TECHNICAL COURSES DEVELOPED WITH EMPLOYERS AND DELIVERED BY INDUSTRY EXPERTS.

WHAT ARE HTQS?

HTQs have been developed in partnership with employers and are delivered by industry experts and focus on the skills, knowledge and behaviours that are in-demand by employers.

They can also act as a stepping stone to further study, such as an apprenticeship or undergraduate degree. Whether you're looking to take the next step in your chosen career or want to retrain into a new industry, an HTQ can help you gain the skills you need for a specialist technical job.

The first HTQs, focussing on digital sector subjects like Cyber Security or Software Development, began teaching in September 2022.

New qualifications in Health and Science and Construction, begin teaching from September 2023, with more sectors coming soon.

WHAT WILL I ACHIEVE?

By completing an HTQ you will also achieve a Level 4 or 5 qualification in your subject area. These technical qualifications include Foundation Degrees, Higher National Certificates and Higher National Diplomas.

The courses are classroom-based with the opportunity to learn practical skills through workshops, role playing exercises, or using industry facilities.



COURSE DURATION

On average an HTQ will take between 1 and 2 years to complete if studying full-time. Flexible options such as part-time, online and learning through short courses may also be available.

HTQs are provided by universities, Institutes of Technology, local colleges and independent providers.

ENTRY CRITERIA

Many providers will have their own entry criteria, such as minimum GCSE or A level (or equivalent) requirements. If you don't have GCSEs or A levels, you may be eligible for an HTQ through an Access to HE course.

COURSES AVAILABLE

Rotherham College:

- Construction Management (Site Supervisor) HTQ
- Diploma in Cybersecurity (HTQ)
- Diploma Data Analyst (HTQ)

Dearne Valley College:

- Health Science Associate Diploma (HTQ)

From September 2023, University Centre Rotherham, Rotherham College and Dearne Valley College are offering HTQs in digital, construction and health and science.

Email careerscoaches@rnngroup.ac.uk for further information.

WHAT IS AN Apprenticeship?

WITH AN APPRENTICESHIP, YOU CAN EARN WHILE YOU LEARN, RECEIVE TRAINING AND DEVELOP SKILLS WITHIN YOUR CHOSEN INDUSTRY SECTOR.

93%

OF APPRENTICES REMAIN EMPLOYED ON COMPLETION

2.2M

PEOPLE HAVE STARTED AN APPRENTICESHIP SINCE 2015

80%

OF AN APPRENTICES TIME IS SPENT AT THE WORKPLACE AND 20% DOING OFF-THE-JOB LEARNING

APPRENTICESHIPS IN PRACTICE

As an apprentice, you are a paid employee, who receives training and education in combination with gaining work experience, where you have a contract of employment and employer rights, such as paid annual leave.

Apprentices work towards a nationally recognised qualification and typically spend four days a week in the workplace and one day a week completing off-the-job training, this is typically (but not always) at College.

APPRENTICESHIP LEVELS

Apprenticeships offer a wide range of different levels to meet the fluctuating demands of each level of business. We provide apprenticeship options ranging from Level 2 to Level 6, all taught by our team of industry-experienced staff.

Type	Level	Equal Educational Level
Intermediate	2	5 GCSEs at grades 9-4
Advanced	3	2 A-Levels
Higher	4, 5	Foundation Degree
Degree	6	Bachelor's Degree



APPRENTICESHIP SALARIES AND BENEFITS

As an apprentice, you are entitled to earn a salary of at least the National Minimum Wage for apprentices, which is currently £5.28 (as of April 2023 - Updated annually on the 1st of April).

A lot of employers choose to pay their apprentices a higher salary than the National Minimum Wage.

As an apprentice, you are also entitled to paid holiday, sick pay, support in the form of mentoring or coaching and benefit schemes such as childcare.

OUR APPRENTICESHIPS

Our apprenticeships last anywhere from 12 months to four years and are available to anyone over the age of 16, with no upper age limit. To explore our apprenticeships, please see our course list (page 31).

We offer apprenticeships in the below areas:

- Business Administration
- Construction
- Early Years and Education
- Engineering
- Hairdressing
- Health and Social Care
- Hospitality
- Management
- Motor Vehicle

£5.28

APPRENTICESHIP NATIONAL MINIMUM WAGE



OUR Courses

Environment and Creative Occupations

Animal Care including Dog Health and Management **34-43**

Horticulture, Conservation and Land Management **44-49**

Essential and Supported Education

English and Maths **50-53**

FLEX (Department for students with SEND or High Needs) **54-57**

Sustainability and Commercial Industries

Construction Trades including Brick, Joinery, Plastering and Painting and Decorating **58-67**

Motor Vehicle including Vehicle Repair and Renewable Alternative Energies **68-75**

Wellbeing and Professional Services

Esport **76-81**

Health and Science **82-91**

Holistic Therapies including Spa Services **92-97**

Sport and Public Services **98-109**

We make every effort to ensure information within our College course guide is accurate and a true representation of the courses and apprenticeships we are offering in 2024/25. However, we do reserve the right to make changes if necessary.

Animal Care

Including Dog Health and Management

ANIMAL CARE

In our fantastic facilities, including specialist animal housing and herpetology rooms, you'll have hands-on access to a variety of domesticated and exotic animals from a range of habitats. You'll gain a wealth of knowledge about different animal breeds, their biology, behaviour, health and welfare, as well as develop skills around their handling and care.

Our courses, from entry level through to degree level, will open the door to professional opportunities in the vast and varied animal health, welfare, handling and husbandry job sectors.

PATHWAYS

Level 1	Transition programme to Animal Care and Land-based Dog Training and working with Dogs (Part Time Adult)
Level 2	Animal Care Dog Grooming Assistant and Dog Training (Part Time Adult) Veterinary Nursing Assistants
Level 3	Practical Animal Management Advanced Animal Management
Level 4/5	HNC/HND Animal Management HNC/HND Animal Management (Wildlife and Countryside Conservation)

WHY STUDY HERE?

- Study in state-of-the-art facilities
- Taught by industry specialists
- Access to Guest speakers and have employer involvement
- Enrichment opportunities to increase employability skills

WHAT CAREERS OR STUDIES COULD I PROGRESS ON TO?

- Conservation Officer
- Dog Groomer
- Dog Handler
- Game Keeper
- Horse Riding Instructor
- Pet Shop Manager
- Veterinary Nurse
- Zoologist
- Zoo Keeper

UNIFORMS

You will be required to purchase a uniform as part of your programme further details can be obtained at interview.



Animal Care

Including Dog Health and Management

TRANSITION PROGRAMME TO ANIMAL CARE AND LAND-BASED

Whether your passion is animals, wildlife conservation or growing flowers and plants, this practical course will be the first step on the ladder to developing the core skills needed for further study or to work in land-based and/or animal care.

WHAT WILL I STUDY?

- Assist with maintaining of the health and wellbeing of animals
- Introduction to Land based industries
- Assertiveness and Decision Making
- Healthy Living
- Group and Team work
- Health and Safety in Practical Environment
- Improve Own Learning
- Personal Development

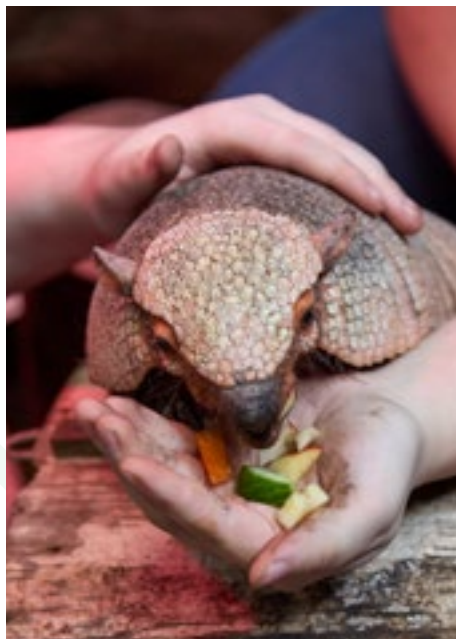
UNIFORMS

You will be required to purchase a uniform as part of your programme further details can be obtained at interview.

ANIMAL CARE

WHAT WILL I STUDY?

- Maintain Animal Health and Welfare
- Undertake Practical Animal Feeding
- Maintain Animal Accommodation
- Undertake work related experience in land-based industries
- Understand the basic principles of animal biology
- Introduction to caring for horses
- Contribute to the care of exotic animals



VETERINARY NURSING ASSISTANTS

Are you looking for a specialised qualification in veterinary nursing? Our course will give you the first step on the ladder to achieving your dream, learning the basic principles of veterinary care.

WHAT WILL I STUDY?

- British Wildlife
- Euthanasia and bereavement
- Practical Animal care
- Practical Animal Handling and Restraint
- Principles of Animal Health
- Principles of body language, behaviour and welfare
- Principles of First Aid
- Principles of Hygiene, cleaning and Disinfection in an Animal Care Environment
- Reception and administration duties in an animal care environment
- Veterinary instruments
- Veterinary medicines in animal care environment

ADVANCED VETERINARY CARE ASSISTANT

WHAT WILL I STUDY?

- Animal Care and Nutrition
- Animal Diseases
- Assist with the Provision of Basic Nursing Care for Animals
- Handling Animals
- Provide First Aid to Animals
- Small Animal Anatomy and Physiology

WE OFFER T LEVELS
IN THIS SUBJECT



T LEVEL ANIMAL MANAGEMENT

Our T Level Animal Management course will give you the hands-on experience of managing animal environments. You will learn management responsibilities and development throughout this course.

WHAT WILL I STUDY?

- Sustainability, including environmental legislation, sustainable development, climate change and waste management principles
- The principles of biosecurity
- Employment rights and responsibilities and progression opportunities within the sector ethical principles
- The supply chain and principles of stock management
- Business organisations, enterprise skills and project management
- Characteristics protected by equality legislation
- Communication
- Principles of customer care
- Finance
- Health and safety
- Information and data

ENGLISH AND MATHS

If you haven't achieved GCSE English and maths at grades 4 or above you will undertake these qualifications alongside your main programme.

Animal Care

Including Dog Health and Management



PRACTICAL ANIMAL MANAGEMENT

If you would love to work hands on with animals then our Animal Management courses may be for you. There are two routes to choose from, practical and non-practical.

WHAT WILL I STUDY?

- Promote and maintain the health and wellbeing of animals
- Plan the handling and restraint of animals
- Plan, supervise and control the movement of animals
- Plan the accommodation of animals
- Plan animal diets and feeding regimes
- Recognise and interpret the behaviour of animals
- Handle animals
- Load and unload animals for transport

ANIMAL MANAGEMENT

WHAT WILL I STUDY?

- Animal Biology
- Animal Welfare and Ethics
- Practical Animal Husbandry
- Work Experience in the Animal Sector
- Animal Management in a retail Environment
- Farm Livestock Husbandry
- Wildlife and Conservation Management
- Animal breeding and Genetics
- Animal Behaviour
- Animal Health and Diseases
- Investigative Research Project
- Principles of Animal Nursing
- Exotic Animal Husbandry
- Zoological Animal Health and husbandry



Animal Care

Including Dog Health and Management

PART TIME - ADULT

DOG TRAINING AND WORKING WITH DOGS

Are you an aspiring dog trainer or would love to work with dogs? Our course will give you the experience of caring for dogs, behavior management and enrichment plus much more.

WHAT WILL I STUDY?

- Caring for a dog
- Dog Anatomy, Physiology and behaviour
- Canine first Aid
- Dog Sports
- Dog Training methods
- Employment Preparation
- Enrichment for dogs



PART TIME - ADULT

DOG GROOMING ASSISTANT AND DOG TRAINING

Would you love a career in dog grooming? With our Dog Grooming Assistant and Dog Training course you will be able to gain the knowledge and skills in all aspects of care and training.

WHAT WILL I STUDY?

- Prepare and groom for dogs prior to bathing
- Bathing of Dogs
- Dry dogs and prepare a dog for styling
- Carry out trimming of a dog's coat to prepare for styling
- Move and lift dogs
- Maintain the cleanliness and biosecurity of the dog grooming environment
- Professional conduct
- Introduction to anatomical features, breed characteristics and behaviour of dogs

ENGLISH AND MATHS

If you haven't achieved GCSE English and maths at grades 4 or above you will undertake these qualifications alongside your main programme.



CASE STUDY

Kayleigh Shaw

Level 2 Dog Grooming

"I enjoy coming to Dearne Valley College and learning in the fantastic teaching environment. After I finish my Level 2 course, I plan to continue my studies and progress to Level 3."

Future Careers...

IN ANIMAL CARE

The animal care sector is ideal for those who enjoy working outside in physically demanding settings or have a passion for caring for animals.

TYPES OF ROLES AVAILABLE:

ANIMAL CARE WORKER

Animal care workers look after animals in kennels, rescue centres and sanctuaries.

Average salary - £19,000**

Day-to-day tasks:

Check animals daily and monitor their health, clean out kennels, enclosures, cages or stables, prepare food and help out at feeding times, clean and groom animals, look after sick or distressed animals and make sure animals are exercised regularly.**

Working environments:

Your working environment may be outdoors some of the time, physically demanding and dirty.**

DOG HANDLER

Dog handlers work with specially trained dogs to help detect and prevent crime, find lost or missing people and protect property.

Average salary - £23,000**

Day-to-day tasks:

Patrol premises and protect property, search for lost or missing people, detect drugs, firearms or explosives, control crowds, look after your dog in your own home and attend training courses with your dog.**

Working environments:

Your working environment may be outdoors in all weathers and physically demanding.**

In-demand skills that commonly appear in job descriptions for roles within the animal care sector include*:

- Communication
- Customer Service
- Management
- Enthusiasm
- Detail Orientated

*Information from EMSI 2022

**Information from nationalcareers.service.gov.uk

Horticulture, Conservation and Land Management

**NURTURE NATURE IN A STATE-OF-
THE-ART LEARNING ENVIRONMENT.**



HORTICULTURE, CONSERVATION AND LAND MANAGEMENT

With us, you can grow your skills and put your budding brain to use in our well-managed learning environments. Combine creativity with nature and science in our outdoor facilities by helping create a conservation area to protect the rare, wild orchids growing in our 12-acre forest.

Grow a wide range of organic produce for sale at our on-site shop. Gain key environment management skills by working in our brand new polytunnels. Students who have completed their qualifications with us are employed across a variety of professions and many have progressed on to Higher Education.

PATHWAYS

Level 1	Transition programme to Animal Care and Land-based
Level 2	Landscape Gardening and Ground Maintenance Landscaping and Horticulture (Part Time Adult)

UNIFORMS

You will be required to purchase a uniform as part of your programme further details can be obtained at interview.

FORESTRY AND ARBORICULTURE

In our 12-acre forest, woodlands and specialist facilities you can cultivate your very own outdoor learning environment and forestry school. You'll care for and maintain trees, work with local employers to learn the art of tree felling and gain experience of the science and practice of producing and managing trees and shrubs. By studying with us, you can branch out into the world of work with the skills for success.

WHY STUDY HERE?

- Study in state-of-the-art facilities
- Taught by industry specialists
- Access to Guest speakers and have employer involvement
- Enrichment opportunities to increase employability skills

WHAT CAREERS OR STUDIES COULD I PROGRESS ON TO?

- Arborist
- Conservation Officer
- Farm Worker
- Game Keeper
- Landscape Gardener

Horticulture, Conservation and Land Management

TRANSITION PROGRAMME TO ANIMAL CARE AND LAND-BASED

Whether your passion is animals, wildlife conservation or growing flowers and plants, this practical course will be the first step on the ladder to developing the core skills needed for further study or to work in land-based and/or animal care.

WHAT WILL I STUDY?

- Assist with maintaining of the health and wellbeing of animals
- Introduction to Land based industries
- Assertiveness and Decision Making
- Healthy Living
- Group and Team work
- Health and Safety in Practical Environment
- Improve Own Learning
- Personal Development



LANDSCAPE GARDENING AND GROUND MAINTENANCE

Would you flourish working in the outdoors? Growing your skills and gaining key environment management knowledge to progress in the future? Then our landscape gardening and grounds maintenance course may be for you.

WHAT WILL I STUDY?

- Laying hard surfaces for external landscaping
- Prepare ground or area for planting
- Plant out container-grown plants
- Plant a tree
- Care for a planted area
- Prune deciduous spring-flowering shrubs
- Propagate plants by stem cuttings
- Erect a garden fence
- Maintain turf
- Mow turf using a pedestrian-controlled mower.

ENGLISH AND MATHS

If you haven't achieved GCSE English and maths at grades 4 or above you will undertake these qualifications alongside your main programme.



PART TIME - ADULT

LANDSCAPING AND HORTICULTURE

WHAT WILL I STUDY?

- Laying hard surfaces for external landscaping
- Prepare ground or area for planting
- Plant out container-grown plants
- Plant a tree
- Care for a planted area
- Prune deciduous spring-flowering shrubs
- Propagate plants by stem cuttings
- Erect a garden fence
- Maintain turf
- Mow turf using a pedestrian-controlled mower.



UNIFORMS

You will be required to purchase a uniform as part of your programme further details can be obtained at interview.

Future Careers...

IN HORTICULTURE, CONSERVATION AND LAND MANAGEMENT

The land-based sector is ideal for those who enjoy working outside in physically demanding settings.

TYPES OF ROLES AVAILABLE:

FARMER

Farmers grow crops and raise farm animals.

Average salary - £20,800*

Day-to-day tasks:

Set budgets and production targets, make sure the farm follows health and safety regulations, feed and check the health of animals, harvest crops, maintain farm equipment and keep financial and stock records.**

Working environments:

Farmers often work outdoors, although may work indoors when doing record keeping or other office based tasks.

LANDSCAPE GARDENER

Landscape Gardeners cultivate flowers, trees, shrubs and other plants, to improve the appearance of terrain and cut-and-lay turf.

Average salary - £19,800*

Day-to-day tasks:

Discuss clients' needs and advise them how to maintain their space, work from plans made by designers, order supplies, turf and seed lawns, plant and prune trees and shrubs and install paving.**

Working environments:

In a garden, at a client's business, at a client's home or at a garden centre.

.....
In-demand skills that commonly appear in job descriptions for roles within the land-based sectors include*:

- Communication
 - Customer Service
 - Management
 - Enthusiasm
 - Detail Orientated
-

*Information from EMSI 2022

**Information from nationalcareers.service.gov.uk

English and Maths

MAKE EVERYDAY LIFE EASIER WITH ESSENTIAL ENGLISH AND MATHS SKILLS.

English and maths skills are essential for work and every day life. That's why we offer a wide variety of courses in English and maths at Dearne Valley College.

Enabling you to move on to higher levels of Further Education, have better job prospects and more job security. We will fully support you to build your confidence in order to achieve your full potential and will ensure to personalise our programmes to suit your needs.

You'll be taught by our experienced team who will support you to build your knowledge in a way that best suits you, within our innovative and purposefully designed learning spaces.



English and Maths

ENTRY LEVEL

FUNCTIONAL SKILLS ENGLISH

This course will help you to build your confidence and independence at home and at work. With classes from Entry Level, these qualifications cover everything from the very basics to more advanced skills. This is a great course for those wanting to build on their ability to write professional letters, reports and CVs.

This course is free to those in receipt of a means tested benefit or those without an English and maths qualification. If you currently hold an English and maths qualification and would like to improve your grade there is a £362.00 cost per course.

WHAT WILL I STUDY?

- Reading Skills
- Spelling
- Writing Skills
- Punctuation
- Communication Skills

WHAT CAN I DO NEXT?

Students can progress onto studying their GCSEs or other Vocational courses. This course will help you move on to another course, enhance your current job opportunities or increase your chances of gaining employment.

ENTRY REQUIREMENTS

- There are no formal entry requirements, but you will need to attend an initial assessment session to determine what level you are to be offered

GCSE

GCSE ENGLISH

This part-time course is perfect for those wanting to gain a qualification in English. If you already have a GCSE qualification in English below a grade 4, the course will be fully funded. You will be taught by our dedicated team who will support you in your learning so that you can develop your knowledge.

This course is free to those in receipt of a means tested benefit or those without an English and maths qualification. If you currently hold a maths and English qualification and would like to improve your grade there is a £362.00 cost per course.

WHAT WILL I STUDY?

- Creative Writing
- Speaking and Listening
- Spoken Language Study
- Reading
- Writing
- Extended Reading

WHAT CAN I DO NEXT?

Students can progress onto further study or Higher Education courses.

ENTRY REQUIREMENTS

- You will need to complete an assessment which meets the entry criteria

ENTRY LEVEL

FUNCTIONAL SKILLS MATHS

This course will help you to build your confidence and independence at home and at work. With sessions from Entry Level, these qualifications cover everything from the very basics to more advanced skills. This is a great course for those wanting to progress in their career or support children with their homework.

This course is free to those in receipt of a means-tested benefit or those without an English and maths qualification. If you currently hold an English and maths qualification and would like to improve your grade there is a £362.00 cost per course.

WHAT WILL I STUDY?

- Addition
- Subtraction
- Multiplication and Division
- Calculating Area, Volume and Capacity
- Graphs and Charts
- Fractions, Decimals, and Percentages
- Problem-solving
- Measure and Ratio

WHAT CAN I DO NEXT?

Students can progress onto GCSE maths or other vocational courses.

ENTRY REQUIREMENTS

- There are no entry requirements needed but you will need to attend an initial assessment session to determine what level you are to be offered

GCSE

GCSE MATHS

This part time course is perfect for those wanting to gain a qualification in maths. If you already have a GCSE qualification in maths below a grade 4, the course will be fully funded. You will be taught by our dedicated team who will support you in your learning so that you can develop your knowledge.

This course is free to those in receipt of a means tested benefit or those without an English and maths qualification. If you currently hold an English and maths qualification and would like to improve your grade there is a £362.00 cost per course.

WHAT WILL I STUDY?

- Algebra
- Geometry and Measures
- Number
- Statistics and Probability
- Flexible Courses Tailored to Your Needs
- Support with Employability Skills

WHAT CAN I DO NEXT?

Students can progress onto further study or Higher Education courses.

ENTRY REQUIREMENTS

- You will need to complete an assessment which meets the entry criteria

Flex

LEARN THE SKILLS YOU NEED TO LIVE INDEPENDENTLY, OR PROGRESS TO EMPLOYMENT OR VOLUNTEERING IN OUR NEW FLEX DEPARTMENT.

Our FLEX Department is for students with Special Educational Needs and Disabilities (SEND) or High Needs.

You can choose from one of our four, project-led pathways depending on your personal aims and ambitions; Independent Living, Horizons, Pre-internships or Supported Internships with each pathway intended to help you towards one of two key goals – adulthood and independence or employment. We'll also help you with your English, maths and IT skills.

When you study at Rotherham College you'll be based in the heart of the town centre with easy access to a wide range of facilities including the market and local shopping areas. You'll also have access to on-site salons, a library and the chance to perform in our theatre.

Our dedicated FLEX area includes a relaxation area, sensory room, purpose built independent flat/bedsit, kitchen area, arts and crafts area and an open classroom.

At Dearne Valley College you'll learn in our purpose-built facility and have access to our on-site facilities including our gym and sports centre, our salons and our brand new forest school.

We work closely with all of the colleges in our Group to provide access to as many experiences as possible, so whichever one of our colleges you're based at you'll have the opportunity to meet people from other areas.

We have strong partnerships with local businesses and organisations and work with them to get involved in community projects. You'll also have the chance to take part in a wide range of health and wellbeing activities, from fitness classes to music and art therapy sessions.

FLEX INDEPENDENT LIVING

The intent of this programme is to primarily support students who suffer with low self-esteem, are deemed vulnerable and who may have specific SEMH and/or behavioural needs.

This programme helps students who are unsure of their career aspirations and who are not fully equipped with the knowledge, skills and behaviours required to progress onto a specific vocational area of choice.

Students will have the opportunity to experience 'taster' sessions within a range of vocational areas to get a feel of what sector they are interested in progressing in, whilst at the same time developing their employability and personal and social development skills towards adulthood.

Students will attend College three days per week.

WHAT WILL I STUDY?

- Employability Skills
- Personal and Social Development Skills
- Independence Skills
- Communication
- Study Skills
- Vocational Specific Units/Skills
- English, maths and ICT

WHAT CAN I DO NEXT?

Students can progress onto another course with FLEX department such as Pre-Internships and Supported Internships.

Students also have the opportunity to progress onto a Vocational Study Programme. An alternative progression route would be Semi-independent living or Supported living.

ENTRY REQUIREMENTS

No formal entry requirements

FLEX HORIZONS

The intent of this programme is to primarily support students who suffer with low self-esteem, are deemed vulnerable and who may have specific SEMH and/or behavioural needs.

This programme is designed for those students who are unclear of their career aspirations and who are not fully equipped with the knowledge, skills and behaviours required to progress onto a specific vocational area of choice.

This programme will provide students with the opportunity to experience 'taster' sessions within a range of vocational areas to get a feel of what sector they are interested in progressing in, whilst at the same time developing their employability and personal and social development skills towards adulthood.

Students will attend College three days per week.

WHAT WILL I STUDY?

- Employability Skills
- Personal and Social Development Skills
- Independence Skills
- Communication
- Study Skills
- Vocational Specific Units/Skills
- English, maths and ICT

WHAT CAN I DO NEXT?

Students can progress onto another course with FLEX department such as Pre-Internships and Supported Internships. Students also have the opportunity to progress onto a Vocational Study Programme. An alternative progression route would be Semi-independent living or Supported living.

ENTRY REQUIREMENTS

No formal entry requirements

FLEX PRE-INTERNSHIPS

Pre-internships are designed to introduce students with SEND and High Needs to working life and are offered in a range of different sectors including Construction, Business Administration, Health and Beauty and Motor Vehicle.

The aim is to support you to develop the confidence and knowledge, skills and behaviours to become employable in your chosen sector.

On a pre-internship you will attend College for two days (10 hours) and work placement for one day (5 hours) each week.

WHAT WILL I STUDY?

- Employability Skills
- Personal Development and Independence
- While studying with us we will work with you to ensure that your maths, English, maths and ICT skills are the best that they can be

WHAT CAN I DO NEXT?

Students can progress onto another course with FLEX department such as Supported Internships. Students could also seek employment or undertake voluntary work.

ENTRY REQUIREMENTS

No formal entry requirements



FLEX SUPPORTED INTERNSHIPS

A Supported Internship is a study programme aimed at giving young people (aged 16-24) with an Education, Health and Care Plan experience in the workplace within a supported environment.

It is a platform for you to further develop your skills and experience in a structured way.

You will take part in the programme with one of our partner employers and spend at least two days (10 hours) per week working in different areas to gain valuable experience with the support of an on-site Job Coach.

You will spend approximately one day at College each week.

WHAT WILL I STUDY?

- Employability Skills
- Personal Development and Independence
- While studying with us we will work with you to ensure that your maths, English and ICT skills are the best that they can be
- This course has an emphasis on being out in the work place developing valuable employability skills, you will spend the majority of your time with an employer

WHAT CAN I DO NEXT?

After completing a Supported Internship, students can progress onto paid employment, undertake voluntary work, or an Apprenticeship.

ENTRY REQUIREMENTS

- You must have an EHCP in place
- You must be committed to participating fully in a work placement, adhering to employers policies etc
- Good attendance and punctuality record
- Willingness to accept a suitable job offer

Construction Trades

*Including Brick, Joinery, Plastering,
and Painting and Decorating*

OUR DEDICATED CONSTRUCTION CENTRE PROVIDES YOU WITH THE BUILDING BLOCKS FOR YOUR FUTURE.

At Dearne Valley College you can build your career in construction and learn a hands-on skilled trade that will prepare you for the industry.

We offer training in all the main construction trades including courses and apprenticeships in bricklaying, carpentry and joinery, painting and decorating and plastering.

There are fantastic opportunities to showcase your skills at competitions and get involved in real-life projects, which will help you develop your CV and enhance your employability. You'll be supported by industry experienced tutors and have the opportunity to complete an industry placement, which will help to develop your employability skills and build your network of contacts.



BRICKLAYING

You'll learn all the key skills for being a Bricklayer: constructing half brick and solid walling, cavity walls, arches and solid wall piers, decorative fireplaces and chimney stacks. Other skills include, brick bonding, trowel skills and building complex masonry. Alongside practical skills you'll also study health, safety and welfare and site procedures in construction. You'll meet key employers in the trade and carry out work experience.

PLASTERING

Our construction centre offers an industry-standard learning environment where each trade has its own workshop space, fitted with both individual booths and large workspaces. After successfully completing one of our industry-recognised qualifications you can pursue a career in the building industry as a plasterer or further your knowledge and experience with an apprenticeship.

CARPENTRY AND JOINERY

You'll learn how to use wood machinery and power tools, explore all aspects of kitchen fitting, building partition walls, fitting door linings and fitting doors, modern truss roof construction, timber floor and roofing techniques and timber technology.

PATHWAYS

Level 1	Bricklaying
	Carpentry and Joinery
	Introduction to Plastering (Adult Course)
	Painting and Decorating
Level 2	Plastering
	Bricklaying
	Carpentry and Joinery
	Plastering
Level 3	Bricklayer Apprenticeship
	Carpentry and Joinery Apprenticeship
	Work-Based Plastering (Adult Course)
	Plastering
Level 3	Plastering Apprenticeship

SAFETY PPE

You will be required to purchase Safety Boots as part of your programme. Further details can be obtained at interview.

ENGLISH AND MATHS

If you haven't achieved GCSE English and maths at grades 4 or above you will undertake these qualifications alongside your main programme.

Construction Trades

Including Brick, Joinery, Plastering, and Painting and Decorating

BRICKLAYING

Would you like to build on your skills and create a dream career within bricklaying? Our practical bricklaying courses will give you the skills you need to start, from learning the basic techniques to more advanced. You will have a solid foundation to begin your career.

WHAT WILL I STUDY?

- Cavity Wall
- ½ Brick Wall
- Single Skin Block Wall
- Solid Walls
- T-Junction
- Handle, Move and store resources
- Construction community Projects
- Personal wellbeing
- Repair and maintain Masonry
- Construct Cavity Walls
- Construct Solids Walls
- Setting out Masonry Structures
- Repair and Maintain Masonry
- Construct Masonry Cladding
- Construct Thin Joint Masonry
- Non-specialist Concrete: Placing and finishing
- Lay Domestic Drainage
- Laying Modular Paving
- Mixing construction materials
- Construction information quantities and communications
- Personal skills in the industry

BRICKLAYING APPRENTICESHIP

On this apprenticeship you will work towards a nationally recognised qualification in Brickwork. As an apprentice Bricklayer, you will lay bricks, blocks and other types of building components in mortar to construct and repair walls, foundations, partitions, arches and other structures such as chimney stacks. You may also work on refurbishment and restoration projects.

WHAT WILL I STUDY?

- Health and Safety
- Customer Service
- Communication.
- Preparation of Material
- Safe working
- Masonry Structures
- Radial and Battered brickwork
- Feature and reinforced brickwork
- Building Technology

ENGLISH AND MATHS

If you haven't achieved GCSE English and maths at grades 4 or above you will undertake these qualifications alongside your main programme.



CASE STUDY

Mantas Pocius

Bricklaying

“I love attending college, the tutors are so knowledgeable and friendly. I plan to go onto an apprenticeship once I’ve completed my course.”

Construction Trades

*Including Brick, Joinery, Plastering,
and Painting and Decorating*

CARPENTRY AND JOINERY

Are you passionate about working in a practical environment? From building window frames to hanging doors, our carpentry and joinery course will be able to help you build a range of skills you will need to start a career in this industry.

WHAT WILL I STUDY?

- Door Lining
- Hanging a door
- Panel Door
- Roof truss
- Skirting and architrave
- Window frame
- Preparing and using Carpentry and Joinery Portable Power Tools
- Handle, Move and store resources
- Perform Joinery Operations
- Undertake Structural Carcassing Operations
- First and Second Fix Carpentry Operations
- Maintaining Non-Structural Carpentry Work
- Marking out routine joinery Products from Setting out Details
- Producing Setting Out details for Routine Joinery products
- Manufacturing standard joinery products
- Personal skills within the industry
- Environmental awareness and sustainability in Construction

CARPENTRY AND JOINERY APPRENTICESHIP

On this apprenticeship you will work towards a nationally recognised qualification in either Site Carpentry or Architectural Carpentry. You will work towards your qualification whilst attending college one day per week to carry-out your practical and written assessments.

WHAT WILL I STUDY?

- Health and Safety
- Safe working
- Preparation of materials
- Prepare and install basic building components e.g. doors, straight staircases, wall and floor units.
- Erecting structural carpentry and roof structures on a building site or in domestic and commercial premises.

PAINTING AND DECORATING

WHAT WILL I STUDY?

- Know tools and equipment needed for painting and decorating.
- Be able to set out the work area.
- Know how to prepare for decorating.
- Be able to apply paint to a prepared surface.
- Be able to apply wallpaper to a prepared surface.
- Be able to leave the work area and tools in a clean and safe state.



Construction Trades

Including Brick, Joinery, Plastering, and Painting and Decorating

PLASTERING

WHAT WILL I STUDY?

If you would love to work hands on in a construction environment then plastering may be for you. Level up your skills and learn the trade to start your dream job.

- Apply Plaster around an opening
- Apply plaster to non-solid internal backgrounds
- Form sand and cement screeds
- Prepare and fix plasterboard and set
- Produce components from moulds
- Apply plaster to solid backgrounds
- Apply Plaster to Internal Surfaces
- Apply Render to external Surfaces
- Preparing background Surfaces for Products
- Forming sand and Cement Screeds
- Produce Cement Castings
- Repair and Maintain Plasterwork
- Produce Cement, position and secure fibrous plaster components
- Analysing Technical Information, Quantities and Communication
- Analysing the Construction Industry and Built Environment
- Apply plaster materials to produce complex internal surfaces

- Apply render to produce complex external surfaces
- Prepare and run in-situ moulds
- Construction Health and Safety

PLASTERING APPRENTICESHIP

This apprenticeship is the ideal starting point for those looking to start their own business or any career within the world of plastering. The apprenticeship will provide you with a nationally recognised qualification, give you an introduction to the construction industry and support you in continuing to develop your practical plastering skills and a thorough understanding of the underpinning knowledge needed in industry.

WHAT WILL I STUDY?

- Internal Plastering
- External Plastering (Traditional, Modern and spray render methods)
- Fibrous plastering
- In-situ moulds (Both plaster and sand and cement)
- Dry lining
- Interior Systems
- Heritage plastering systems

SAFETY PPE

You will be required to purchase Safety Boots as part of your programme. Further details can be obtained at interview.

ADULT COURSE INTRODUCTION TO PLASTERING

WHAT WILL I STUDY?

- Health & Safety and PPE
- To cut and fix plaster board to walls and ceilings
- To tape standard and internal joints
- To cut and fix angle beads around windows and reveals
- To prepare surfaces before plastering using bonding plaster and finishing plaster, ensuring a flat finished surface ready for decorating
- To mix plastering materials
- To skim walls
- To skim ceilings
- To apply PVA adhesive Unibond to existing surfaces.

ADULT COURSE WORK-BASED PLASTERING

WHAT WILL I STUDY?

- Applying finishing plaster to prepared surfaces in the workshop
- Apply solid render to background surfaces and producing finishes in the workplace
- Conforming to General Health, Safety and Welfare in the workplace
- Conforming to Productive Working Practices in the workplace
- Moving, Handling and Storing Resources in the workplace
- Producing internal solid plastering finishes in the workplace
- Installing direct bond dry lining systems in the workplace
- Installing mechanically fixed plasterboard in the workplace



Future Careers...

IN CONSTRUCTION

The construction sector is ideal for those who like working outside, enjoy working practically and using their own initiative.

CONSTRUCTION SITE SUPERVISOR

Construction Site Supervisors manage staff and subcontractors on building sites.

Average salary - £37,800*

Day-to-day tasks:

Supervise workers and subcontractors
- help project managers to plan work
- manage orders and deliveries of construction materials - organise staff work schedules - check work is carried out safely - complete records for site reports and attend site management meetings.**

Working environments:

On Construction sites.

BRICKLAYER

Bricklayers build houses, repair walls and chimneys and refurbish decorative stonework. They also work on restoration projects.

Average salary - £28,000*

Day-to-day tasks:

Measure work areas and set out the first row of bricks - mix mortar by hand or with a mechanical mixer - use a trowel to lay bricks and mortar - shape and trim bricks using hammers - chisels and power tools and check that rows are straight using a spirit level.**

Working environments:

On Construction sites.

.....
In-demand skills that commonly appear in job descriptions for roles within the construction sector include*:

- Communication
 - Management
 - Planning
 - Customer Service
 - Leadership
-

CASE STUDY

Brendan Marshall

Bricklaying - Former Student of Rawmarsh Community School

"I came to study at Dearne Valley College as the teaching is excellent and has fantastic construction facilities."

.....

*Information from EMSI 2022

**Information from nationalcareers.service.gov.uk

Motor Vehicle

Including Vehicle Repair and Renewable Alternative Energies

GEAR UP FOR YOUR FUTURE IN OUR HANDS-ON, STATE-OF-THE-ART WORKSHOPS.

Our Motor Vehicle courses give you access to modern professional-standard workshops where you can learn from industry-experienced tutors in environments that reflect real-world working environments. As well as top-quality workspaces you'll have the chance to gain sought-after skills and work on emerging technologies such as electric and hybrid vehicles. You can choose to specialise in either vehicle maintenance or vehicle repair, opening up a breadth of career choices in an evolving industry.

MOTOR VEHICLE

The motor vehicle teaching team has a passion for all things automotive, creating an energetic and rewarding learning environment. Within our industry-standard, state-of-the-art workshops, you'll be hands-on working on real vehicles, to gain the knowledge and skills that will enable you to achieve your aims and ambitions within the motor vehicle industry.

Our experienced staff will provide you with the experience of vehicle maintenance, vehicle fitting, body repair, hybrid and electric vehicle awareness and automotive refrigerant handling.

SAFETY PPE

You will be required to purchase Safety Boots and Overalls as part of your programme. Further details can be obtained at interview.

PATHWAYS - MOTOR VEHICLE	
Level 1	Vehicle Accident - Multi Trade
Level 2	Vehicle Fitting
	Body
	Light Vehicle Maintenance and Repair
	Hybrid/Electric (Adult Course)
Level 3	Introduction to Hybrid/Electric (Adult Course)
	Autocare Apprenticeship
	F-Gas (Adult Course)
	Light Vehicle Maintenance and Repair
	Vehicle Service and Maintenance Technician Apprenticeship
Level 4	Hybrid/Electric (Adult Course)
	Vehicle Accident Repair
	Hybrid/Electric (Adult Course)

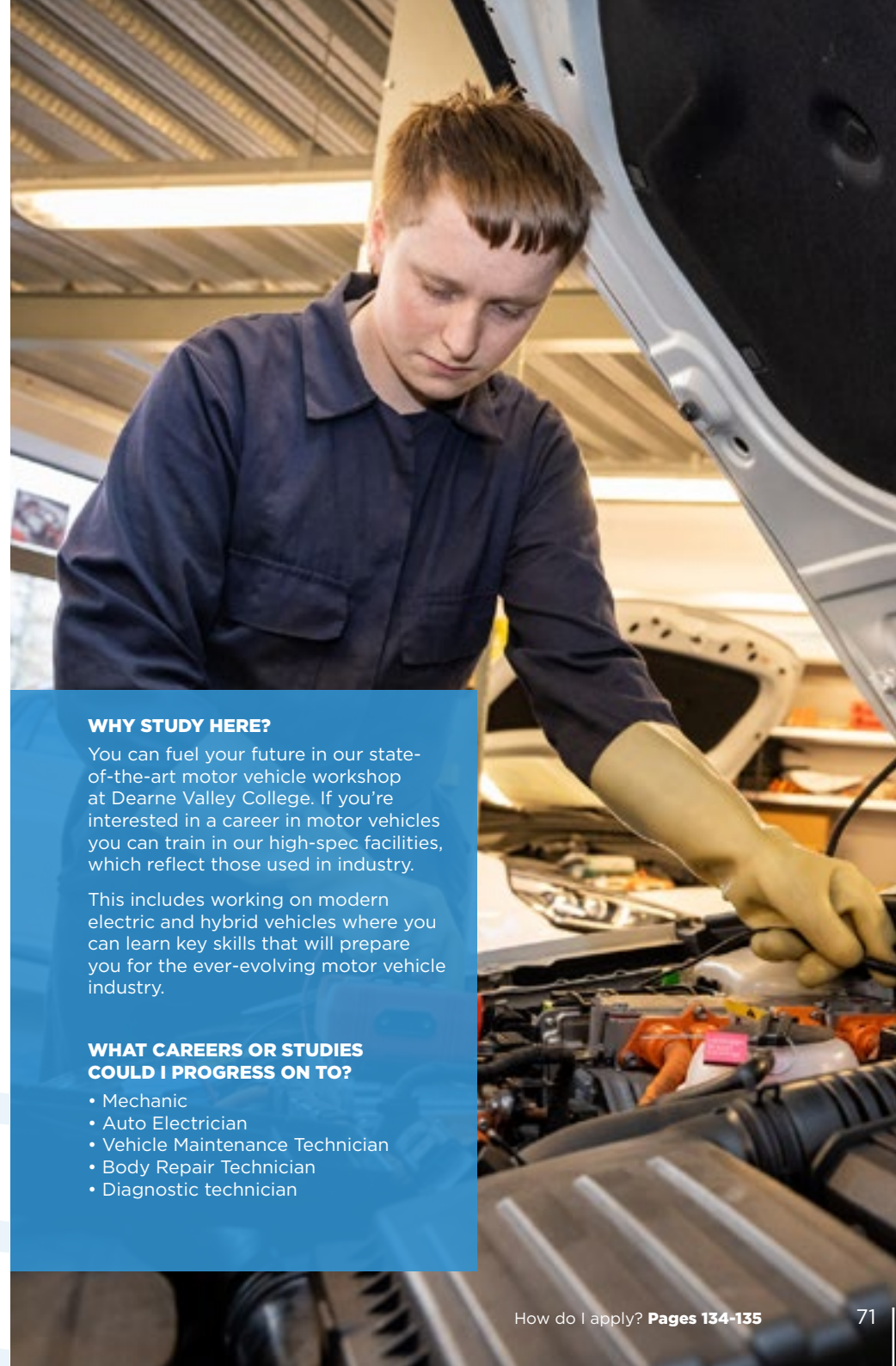
WHY STUDY HERE?

You can fuel your future in our state-of-the-art motor vehicle workshop at Dearne Valley College. If you're interested in a career in motor vehicles you can train in our high-spec facilities, which reflect those used in industry.

This includes working on modern electric and hybrid vehicles where you can learn key skills that will prepare you for the ever-evolving motor vehicle industry.

WHAT CAREERS OR STUDIES COULD I PROGRESS ON TO?

- Mechanic
- Auto Electrician
- Vehicle Maintenance Technician
- Body Repair Technician
- Diagnostic technician



Motor Vehicle

Including Vehicle Repair and Renewable Alternative Energies

VEHICLE ACCIDENT REPAIR (MULTI-SKILL)

This course will allow opportunity to develop essential motor vehicle body repair skills needed by employers in today's workplace.

WHAT WILL I STUDY?

- Health and Safety in the Workplace
- Tools, Equipment and Consumable Materials for Vehicle Maintenance
- Engine Cooling System Components and Maintenance
- Steering System Components and Maintenance

- Braking System Components and Maintenance
- Vehicle Electrical Circuits and Components
- Remove and Replace Interior and Exterior Trim
- Vehicle Damage Assessment
- Introduction to Metal Preparation
- Panel Removal and Refitting
- Minor Panel Damage Repairs
- Vehicle Welding Techniques
- Adhesive Bonding and Mechanical Fastening
- Primer Preparation and Application Techniques
- Vehicle Interior, Exterior Valeting and Detailing



VEHICLE FITTING

This course engages and motivates students who do not have any formal entry qualifications and are interested in developing skills specific to the maintenance of motor vehicles and the various roles that are available in the retail motor industry.

The delivery model focuses on developing a combination of knowledge, skills and behaviours with the flexibility to learn and make progress in manageable steps.

WHAT WILL I STUDY?

- Health, Safety and Good Housekeeping in the Automotive Environment
- Supporting Job Roles in the Automotive Environment
- Materials, Fabrication, Tools and Measuring Devices used in the Automotive Environment
- Inspection, Repair and Replacement of High-Performance Light Vehicle Tyre
- Inspection, Testing and Replacement of Vehicle Batteries and Related Components Inspection, Adjustment and Replacement of Light Vehicle Braking Systems and Components

ENGLISH AND MATHS

If you haven't achieved GCSE English and maths at grades 4 or above you will undertake these qualifications alongside your main programme.

LIGHT VEHICLE MAINTENANCE AND REPAIR

WHAT WILL I STUDY?

- Health, Safety and Good Housekeeping in the Automotive Environment
- Supporting Job Roles in the Automotive Environment
- Materials, Fabrication, Tools and Measuring Devices used in the Automotive Environment
- Routine Light Vehicle Maintenance
- Removing and Replacing Light Vehicle Engine Units and Components
- Light Vehicle Engine Mechanical, Lubrication and Cooling System Units and Components
- Removing and Replacing Light Vehicle Electrical Units and Components
- Removing and Replacing Light Vehicle Chassis Units and Components
- Removing and Replacing Light Vehicle Transmission and Driveline Units and Components
- Diagnosing and Rectifying Vehicle Auxiliary Electrical Faults
- Diagnosing and Rectifying Light Vehicle Engine Faults
- Diagnosing and Rectifying Light Vehicle Chassis System Faults
- Diagnosis and Rectification of Light Vehicle Chassis System Faults
- Diagnosis and Rectification of Light Vehicle Transmission and Driveline Faults

Motor Vehicle

Including Vehicle Repair and Renewable Alternative Energies

VEHICLE ACCIDENT REPAIR PAINT

Our courses in Vehicle Accident Repair will provide you with practical automotive skills and underpinning theory and knowledge needed to repair a range of motor vehicles, delivered within our specialist automotive workshops.

WHAT WILL I STUDY?

- Health, Safety and Good Housekeeping in the Automotive Environment
- Knowledge of Support for Job Roles in the Automotive Environment
- Tools and Equipment Used in Vehicle Refinishing
- Applying Fillers and Foundation Materials
- Preparing Metal and Pre-Painted Surfaces
- Knowledge of Repairing Minor Paint Defects
- Removing and Fitting Non-Permanently Fixed Motor Vehicle Body Panels
- Preparation and application procedures
- Diagnosis and rectifying of paint faults
- Working with plastic materials and components
- Preparing metal and pre-painted surfaces
- Establishing paint defects
- Applying topcoats and completing refinishing
- Colour matching

AUTOCARE APPRENTICESHIP

On this apprenticeship you will carry out a range of services and repairs to cars, car derived vans and light goods vehicles, working in an Auto-care or 'Fast-Fit' centre, which may be part of a national chain or operated by a regional/local independent group/owner. Upon completion, you will attain a nationally recognised qualification.

WHAT WILL I STUDY?

- Tyre Legislation and Technical Information
- Fundamentals of Specific Vehicle Systems
- Vehicle System Component Replacement
- 4-wheel Geometry Principles and Operations
- Basic Consumer Legislation
- Health and Safety Legislation
- Hybrid/Electric Vehicle Systems

SAFETY PPE

You will be required to purchase Safety Boots and Overalls as part of your programme. Further details can be obtained at interview.



VEHICLE SERVICE AND MAINTENANCE TECHNICIAN APPRENTICESHIP

On this apprenticeship you will carry out a range of services and repairs to cars, car derived vans and light goods vehicles. You will work on all the systems found within the vehicle, including replacing simple parts to solving complex faults with the use of diagnostic methods and equipment. Upon completion, you will attain a nationally recognised qualification.

WHAT WILL I STUDY?

- Routine Servicing and Inspection Procedures
- Steering and Suspension Geometries
- Electrical Circuit Requirements and Calculations
- Common Fault Types, Causes and Effects
- Vehicle Emissions and Legal Requirements
- Alternative Fuels and Hybrid and Electric Systems

ADULT COURSE HYBRID AND ELECTRIC

The content of these qualifications have been designed to give the learners the knowledge and skills required to work safely on Electric/Hybrid vehicles whilst carrying out diagnostic, testing and repair activities.

This may include vehicles that may have or had damage to their high energy/ electrical system.

ENGLISH AND MATHS

If you haven't achieved GCSE English and maths at grades 4 or above you will undertake these qualifications alongside your main programme.

Future Careers...

IN MOTOR VEHICLE

The motor vehicle sector is ideal for those who have an enthusiasm for repairing cars, have problem-solving skills and the ability to use their own initiative.

TYPES OF ROLES AVAILABLE:

VEHICLE TECHNICIAN

Vehicle Technicians repair and service cars and vans.

Average salary - £27,900*

Day-to-day tasks:

Using and maintaining machines and tools, finding and diagnosing faults, speaking to customers about their vehicle, repairing and replacing faulty parts, carrying out services and updating vehicle service records.**

Working environments:

Garage or workshop setting

MOTOR VEHICLE FITTER

Motor Vehicle Fitters repair and replace worn and damaged tyres, exhausts, batteries and parts.

Average salary - £22,400*

Day-to-day tasks:

Testing batteries, checking tyres and exhausts, replacing or repairing faulty parts, balancing and realigning wheels, repairing punctures and providing customer advice.**

Working environments:

Garage or workshop setting

In-demand skills that commonly appear in job descriptions for roles within the motor vehicle sector include*:

- Communication
- Customer Service
- Sales
- Detail Oriented
- Management

*Information from EMSI 2022

**Information from nationalcareers.service.gov.uk

Esport

LEVEL UP YOUR FUTURE WITH OUR AMAZING ESPORTS COURSES.

Esport is one of the fastest growing participation sports in the world. Esport is a fusion of gaming, business, events and health and wellbeing subjects brought together under one roof.

Our Level 1, 2 and 3 courses are a brilliant blend of Computing, Business Studies and Sports, so you're equipped with the best chance for your dream career in the rapidly expanding Esport sector.

Esport allows you to express your passion for gaming and apply it to a multitude of roles within this developing and exciting industry.

Our programmes encourage you to develop skills in gaming and equip you with the skills for success across a whole range of supporting roles within the sector. Completing our Level 3 Access course also opens the door to exciting degree level studies at UCR.

Core units of study at all levels include: Introduction to Esport, Esport Skills, Strategy and Analysis, Enterprise and Entrepreneurship in Esport, Health, Wellbeing and Fitness, Live Streaming, Branding, Social Media, Shoutcasting, Esport and Coaching.

UNIFORMS

You will have the option to purchase an Esport shirt as part of your programme, further details can be obtained at interview.

PATHWAYS	
Level 1	Transition Programme - Esport
Level 2	Esport
Level 3	Access to HE - Esport Esport
Level 4/5	BA Hons in Esport

WHY STUDY HERE?

Dearne Valley College invested heavily in new Esport facilities in order to give you the experience you deserve at College.

Our high spec machines can run the most demanding of Esport experiences. This coupled with our retro console area, our motivational learning spaces and access to our gym and wellbeing facilities makes Dearne Valley College an excellent choice to pursue a career in this fast moving industry.

WHAT CAREERS OR STUDIES COULD I PROGRESS ON TO?

- Professional Gamer
- Events Manager
- Journalist/Content Creator
- Marketing/PR Executive
- Developer



Esport

TRANSITION PROGRAMME TO ESPORT

Would you like to work within the exciting world of Esports? This course is designed as a first step into the area of Esports and acts as a route into this thrilling and inclusive industry. It is designed to build your confidence and enable you to make an informed decision on your next step in your career.

WHAT WILL I STUDY?

- College induction
- Assertiveness and Decision Making
- Healthy Living
- Group and Team work
- Health and Safety in Practical Environment
- Improve Own Learning
- Personal Development
- Communication for Esports
- Enterprise for Esports
- Using the Internet
- Website software

ADULT COURSE ACCESS TO ESPORT

Begin your career in the modern and broad arena of Esports with our access course. You will learn a range of skills from competitive gaming to marketing and everything in between to start your dream career.

WHAT WILL I STUDY?

- Competitive Gaming
- Video Production
- Esports and Social Media
- Research Esport Event Production
- Live Esport Event Production
- Business Studies, ICT, Marketing, Graphic Design or Psychology
- Academic Study Skills

ENGLISH AND MATHS

If you haven't achieved GCSE English and maths at grades 4 or above you will undertake these qualifications alongside your main programme.

ESPORT

Develop your dream job with our course in Esports. Learn all the ins and outs of this immersive subject and gain vital skills in areas such as coaching, events, live streaming and much more.

WHAT WILL I STUDY?

- Introduction to Esports
- Ethical and Current Issues in Esports
- Enterprise and Entrepreneurship in the Esports Industry
- Games Design
- Esports Skills, Strategies and Analysis
- Health, Wellbeing and Fitness for Esports Players
- Nutrition for Esports Performance
- Establishing an Esport Organisation
- Plan for an Esport Event
- Establishing an Esport Enterprise
- Streaming for Esports
- Positive Health and Wellbeing in Esport
- Live-streamed Broadcasting
- Shoutcasting
- Esports Events
- Customer Immersion Experiences
- Esports Coaching
- Business Applications of Esports in Social Media
- Psychology for Esports Performance
- Corporate Social Responsibility in Sport



UNIFORMS

You will have the option to purchase an Esport shirt as part of your programme, further details can be obtained at interview.

Future Careers...

ESPORT

The esports sector is ideal for those who are interested in working in the competitive gaming sector and can motivate others in a fast-paced challenging environment.

EVENTS MANAGER

Event Managers organise, promote and run promotional, business and social events.

Average salary - £25,800*

Day-to-day tasks:

Discussing and suggesting ideas about the type of event the client wants, working to agreed budgets and timescales, researching and booking venues and suppliers and negotiating prices, following health and safety regulations, publicising events and managing the running of events.**

Working environments:

Event venues, in an office or at a client's business.

BROADCAST JOURNALIST

Broadcast Journalists research and present news stories on TV, radio and the internet.

Average salary - £24,800*

Day-to-day tasks:

Generate story ideas, write website or social media content, prepare and conduct interviews, present in a TV or radio studio, ask questions at briefings and direct a small camera or sound crew or operate recording equipment yourself**

Working environments:

A studio or in an office.

.....
In-demand skills that commonly appear in job descriptions for roles within the esports sector include*:

- Communication
 - Management
 - Detail Oriented
 - Planning
 - Leadership
-

CASE STUDY

Deanna McKellar

Level 3 Esports - Former Student of The Growth Education Centre

“Esport is a very friendly environment and the tutors are great! After my course, I plan to take my skills to the next level and focus on my YouTube career.”

.....

*Information from EMSI 2022

**Information from nationalcareers.service.gov.uk

Health and Science

DEVELOP THE IN-DEMAND SKILLS NEEDED TO MAKE A DIFFERENCE TO SOMEONE'S LIFE.

HEALTH AND SOCIAL CARE

The care sector is one of the biggest and most important industries in the UK. If you are a caring person and interested in a career in Health Care, Nursing, Occupational Therapy, Social Care or Clinical Practice, we will provide you with the best learning experience and industry-relevant qualifications to unlock your potential and succeed in your chosen career as a Health Science Professional.

You will need to be flexible and committed to the values and principals of care for our growing and ageing population.

Studying with us will provide opportunities for you to learn from highly skilled tutors with expertise in Clinical Practice, Health Care and Social Work.

Dearne Valley College is the Hub for Higher Skills in Health and Social Care and we are currently developing a Health and Science Laboratory, simulated Clinical Suite and Medical Assessment Ward and new sector related technologies. You will be able to complete a variety of enrichment programmes and competitions to develop employability and personal development skills.

You will also be able to take part in a range of Educational Visits, Volunteering and organise community events.

Job opportunities are vast, varied and very much in-demand; you could go on to become a Nurse, Operating Department Practitioner, Social Worker, Support Worker, Midwife, Carer or Counsellor. Our nationally recognised qualifications provide you with sought-after, transferable skills for a successful career to begin your journey in the health and social care sector.

WHY STUDY HERE?

- Study in state-of-the-art facilities
- Taught by industry specialists
- Access to Guest speakers and have employer involvement
- Enrichment opportunities to increase employability skills

WHAT CAREERS OR STUDIES COULD I PROGRESS ON TO?

- Addiction Counsellor
- Bereavement Counsellor
- Carer
- Counsellor
- Healthcare Science Associate
- Midwife
- Nurse
- Paramedic
- Social Worker
- Student Counsellor



COUNSELLING

Our Counselling courses are delivered part-time so you can fit studying around your other commitments.

Our Counselling courses work to the CPCAB Model of Helping Work and Counselling Practice, exploring the different levels and dimensions of client problems, and the key helping and counselling processes of change.

Our tutors are qualified and accredited Counsellors and Clinical Supervisors, as well as Members of the British Association for Counselling and Psychotherapy (BACP) and the National Counselling Society (NCS).

Our programmes, progressing from Level 2 and through to Level 4, develops the key knowledge, skills, and behaviours to become competent helpers and accredited therapeutic counsellors.

PATHWAYS - HEALTH AND SOCIAL CARE

Level 1	Transition Programme to Health and Social Care
Level 2	CPCAB in Counselling Skills (Adult Course) Health and Social Care
Level 3	Access to HE Health Science Professions (Adult Course) CPCAB in Counselling Studies (Adult Course) Health and Social Care
Level 4/5	CPCAB Diploma in Therapeutic Counselling

ENGLISH AND MATHS

If you haven't achieved GCSE English and maths at grades 4 or above you will undertake these qualifications alongside your main programme.

Health and Science

TRANSITION PROGRAMME TO HEALTH AND SOCIAL CARE

If you want to learn more about the Childcare or Health and Social Care Industries, this course provides an excellent basis for you to begin working towards a career within nurseries and children's centres, as a Teaching Assistant or in a range of roles within the Health and Social Care sector.

You will develop care-specific skills as well as transferable skills which will allow you to move onto your chosen progression route.

ENGLISH AND MATHS

If you haven't achieved GCSE English and maths at grades 4 or above you will undertake these qualifications alongside your main programme.

WHAT WILL I STUDY?

- College induction
- Assertiveness and Decision Making
- Healthy Living
- Group and Team work
- Health and Safety in Practical Environment
- Improve Own Learning
- Personal Development
- Craft Activities
- Introduction to Health & Social Care
- Presentation Skills
- Safeguarding
- Health Psychology
- Human Musculoskeletal System
- Psychological Disorders
- Infection and Immunity
- Values, Diversity and Rights
- Human Circulation and Gas Exchange



Health and Science

ADULT COURSE

ACCESS TO THE HEALTH SCIENCE PROFESSIONS

WHAT WILL I STUDY?

- Biology
- Psychology
- Health
- Social Policy
- Study Skills

ADULT COURSE

HEALTHCARE SCIENCE ASSOCIATE (HTQ)

WHAT WILL I STUDY?

- Clinical physiology,
- Medical physics,
- Cardiac sciences,
- Respiratory sciences,
- Neurophysiology,
- Understanding of the scientific principles, techniques, and practices.

ENGLISH AND MATHS

If you haven't achieved GCSE English and maths at grades 4 or above you will undertake these qualifications alongside your main programme.

ADULT COURSE - PART TIME

MENTAL HEALTH AWARENESS

WHAT WILL I STUDY?

- Be aware of what is meant by mental health
- Be aware of some of the social and personal effects of mental
- Be aware of some of the responses to mental health issues
- Be aware of cultural diversity in relation to mental health issues

ADULT COURSE - PART TIME

WORKING WITH INDIVIDUALS WITH LEARNING DISABILITIES

WHAT WILL I STUDY?

- Understand the Context of Supporting Individuals with Learning Disabilities
- Principles of Safeguarding and Protection in Health and Social Care
- Introduction to Personalisation in Social Care
- Principles of Positive Risk Taking for Individuals with Disabilities
- Introductory Awareness of Autistic Spectrum Conditions
- Principles of Supporting Individuals with a Learning Disability to Access Healthcare



Health and Science

ADULT COURSE

COUNSELLING SKILLS

WHAT WILL I STUDY?

- Use counselling skills ethically and safely
- Establish and sustain the boundaries of the helping role
- Work empathically as a helper
- Focus on the needs and concerns of client
- Use self-awareness in helping work
- Use a range of counselling skills to facilitate the helping interaction
- Use feedback and reflection to enhance counselling skills

ADULT COURSE

COUNSELLING STUDIES

WHAT WILL I STUDY?

- Prepare to work within an ethical framework for counselling.
- Understanding the counselling relationship.
- Understand difference and diversity issues to develop empathetic understanding
- Use counselling theory to develop self-awareness in counselling practice.
- Understand theories of counselling and mental health.
- Use feedback, reflection and supervision to support counselling studies.

ADULT COURSE

THERAPEUTIC COUNSELLING

WHAT WILL I STUDY?

- Working ethically, safely and professionally as a counsellor
- Working within a counselling relationship
- Working with client diversity in counselling work
- Working within a user-centred approach to counselling
- Working with self-awareness in the counselling process
- Working within a coherent framework of counselling theory and skills
- Working self-reflectively as a counsellor

ENGLISH AND MATHS

If you haven't achieved GCSE English and maths at grades 4 or above you will undertake these qualifications alongside your main programme.



CASE STUDY
Louise Barker
Access to HE - Health Science Professions

“The atmosphere is really friendly and the support from my tutors is fantastic. After my course, I plan on studying Adult Nursing at degree level.”

Future Careers...

HEALTH AND SCIENCE

The health and science sector is ideal for those who have a passion for caring for others and includes jobs in personal care and healthcare.

TYPES OF ROLES AVAILABLE:

MIDWIFE

Midwives support pregnant women and their babies before, during and after, childbirth.

Average salary - £32,100*

Day-to-day tasks:

Giving pregnant women advice on staying healthy, run classes on pregnancy and parenting, check the health of mother and baby during pregnancy, monitor the mother and baby during labour, deliver the baby and visit people's homes to check on mother and baby.**

Working environments:

You could work at a client's home, at a health centre or a hospital.

SOCIAL WORKER

Social workers help to protect vulnerable children and adults from harm or abuse and support people to live independently.

Average salary - £35,500*

Day-to-day tasks:

Put together support plans for clients, keep records and write reports, discuss your cases with your supervisors, support clients safety and take the right action to protect them when necessary, work closely with communities, health professionals and other agencies, help clients to develop and maintain independent living skills and hold meeting and assessments with individuals and families to review their situation.**

Working environments:

You could work in an office, NHS or private hospital, an adult care home or children's care home.

In-demand skills that commonly appear in job descriptions for roles within the health and social care sector include*:

- Communication
- Management
- Enthusiasm
- Compassion
- Leadership

*Information from EMSI 2022

**Information from nationalcareers.service.gov.uk



Spa and Holistic Therapies

IF YOU HAVE A CREATIVE FLAIR AND ARE INTERESTED IN STYLE THEN OUR HAIR AND BEAUTY COURSES ARE THE PLACE FOR YOU.

At Dearne Valley College you will have the opportunity to start your learning at Level 1 with the full diploma in hair and beauty providing a solid foundation to progress to future programmes within the industry.

SPA AND HOLISTIC THERAPIES

If complimentary therapies and spa are your chosen career pathways then you will continue your journey at Dearne Valley College progressing onto the Level 2 Diploma in complimentary therapies and either choose from a Level 3 diploma in complimentary therapies or a Level 3 Diploma in body and spa therapy.

You will work on essential knowledge skills and behaviours to enable you to develop as an independent learner and demonstrate the skills required for the holistic and spa industry.

You will also benefit from high quality work placements and access to guest speakers and enrichment activities to help bring learning to life. All sessions have an element of practical based learning, theory taught units, independent study and tutorial and will be taught in a state-of-the-art salon with up to date equipment and taught by industry specialists.

HAIR

Should your chosen pathway be hairdressing you will have opportunity to transfer to the Rotherham town centre campus at Level 2 and Level 3.



WHY STUDY HERE?

- Study in state-of-the-art facilities
- Taught by industry specialists
- Access to Guest speakers and have employer involvement
- Enrichment opportunities to increase employability skills

WHAT CAREERS OR STUDIES COULD I PROGRESS ON TO?

- Spa Therapist
- Holistic Therapist
- Holistic clinic self-employment
- Massage Therapist
- Spa management
- Access to Level 4 Higher education qualifications and sports massage
- Teaching and assessing
- Self-employment
- Destination spa therapist

PATHWAYS

Level 1	Hair and Beauty
Level 2	Complementary Therapies
Level 3	Body and Spa Therapy
	Massage
	Sports Massage Therapy

ENGLISH AND MATHS

If you haven't achieved GCSE English and maths at grades 4 or above you will undertake these qualifications alongside your main programme.

UNIFORMS

You will be required to purchase a uniform and kit as part of your programme further details can be obtained at interview.

Spa and Holistic Therapies

BODY AND SPA THERAPIES

Create your dream career with our Body and Spa Therapies course, where you will be able to learn professional techniques such as stone therapy massage and all manner of spa treatments.

WHAT WILL I STUDY?

- Health and safety
- Client care
- Body massage
- Monitor and maintain spa area
- Provide spa treatments
- Stone therapy massage
- Indian Head massage
- Facial Electrotherapy

COMPLIMENTARY THERAPIES

Renew your skills with our Complimentary Therapies course and learn all the tricks of the trade in reflexology and aromatherapy.

WHAT WILL I STUDY?

- Basic aromatherapy techniques using pre-blended oils
- Basic reflexology
- Basic massage therapy techniques
- Knowledge of anatomy and physiology
- Introduction to principles and practice of complementary therapies
- Introduction to healthy eating and wellbeing

HAIR AND BEAUTY

Begin your career with our Hair and Beauty course that is designed to provide you with basic hairdressing and beauty therapy practical skills and knowledge, as well as an insight to the industry. You will gain skills of both the practical application of hair and beauty techniques and the knowledge of treatments and clients.

WHAT WILL I STUDY?

- Introduction to the hair and beauty sector
- Health and safety
- Working with others
- Shampoo and conditioning
- Colour hair using temporary colour
- Salon reception duties
- Plaiting and twisting hair
- Basic manicure
- Skincare
- Basic makeup
- Themed face painting
- Creating an image

ENGLISH AND MATHS

If you haven't achieved GCSE English and maths at grades 4 or above you will undertake these qualifications alongside your main programme.



Future Careers...

IN SPA AND HOLISTIC THERAPIES

The spa and holistic therapies sector is ideal for those who have a creative flair, enjoy helping people look and feel good about themselves and have a passion for keeping up with the latest trends.

TYPES OF ROLES AVAILABLE:

HAIR SALON MANAGER

Hair Salon Managers organise and coordinate resources of hair salons.

Average salary - £22,200*

Day-to-day tasks:

Recruit and organise staffing, order stock and promote products to customers, discuss client requests, suggest style ideas, cut, colour and style hair and keep up to date with new trends, techniques and hair products.**

Working environments:

Salons, health spas, on a cruise ship or in a hotel setting.

BEAUTY THERAPIST

Beauty Therapists provide face and body treatments to clients.

Average salary - £20,500*

Day-to-day tasks:

Give clients facials, apply and advise on make-up, shape eyebrows, give manicures, pedicures and nail treatments, hair removal and tanning.**

Working environments:

Salons, health spas, on a cruise ship or in a hotel setting.

In-demand skills that commonly appear in job descriptions for roles within the spa and holistic therapies sector include*:

- Customer Services
- Sales
- Communication
- Enthusiasm
- Detail Orientated

*Information from EMSI 2022

**Information from nationalcareers.service.gov.uk

Public Services

DEVELOP THE KEY SKILLS NEEDED TO CARE FOR YOUR COMMUNITY.

If a career working in a frontline or supporting role for the emergency services or armed forces sounds like the job for you, a course in public services could give you a head start.

Studying Public Services at Dearne Valley College you'll develop skills sought-after by employers including teamwork, initiative, leadership and communication so that you can achieve your dream career in the uniformed and non-uniformed public services industry. There's also the opportunity to gain additional qualifications alongside your studies including emergency first aid, canoeing and mountain biking.

With us, what you learn is what you'll use. Our talented team of tutors bring with them experience of working in the public services sector. They bring passion and professional expertise to your learning, so you're safe in the knowledge that learning with us means you have what it takes for a role in public services.

UNIFORMS

You will be required to purchase a uniform as part of your programme further details can be obtained at interview.

PATHWAYS - PUBLIC SERVICES

Level 1	Transition to Sport and Public Services
Level 2	Entry to Uniformed Services
Level 3	Access to HE - Criminology and Policing (Adult Course) Uniformed Protective Services
Level 4/5	Crime and Criminal Justice

WHY STUDY HERE?

- Study in state-of-the-art facilities
- Taught by industry specialists
- Access to Guest speakers and have employer involvement
- Enrichment opportunities to increase employability skills
- You can develop your skills in action-packed activities and pursuits using the local brilliant facilities such as Manvers boathouse and lake, granting access to a range of land and water sports.

WHAT CAREERS OR STUDIES COULD I PROGRESS ON TO?

- Armed Forces
- Police Service
- Fire Service
- Ambulance Service



Public Services

TRANSITION TO SPORT AND PUBLIC SERVICES

This course is designed for those interested in a career in sport and public services sectors. As part of this course, you will acquire and develop generic, transferable and career specific skills to complete tasks and demonstrate a level of achievement that enables your progression.

You will complete a range of sport and public service-related units, study an appropriate English and maths qualification and develop transferable employability and communication skills.

WHAT WILL I STUDY?

- College induction
- Assertiveness and Decision Making
- Healthy Living
- Group and Team work
- Health and Safety in Practical Environment
- Improve Own Learning
- Personal Development
- Sports Activity
- Law and Order
- Research Skills
- Presentation Skills

ENGLISH AND MATHS

If you haven't achieved GCSE English and maths at grades 4 or above you will undertake these qualifications alongside your main programme.

ENTRY TO UNIFORMED SERVICES

Whether you are interested in Policing, Criminology, Prison Services, Armed Services, Fire Rescue, Forensic Science, Paramedics or Law and the Criminal Justice System, we will provide you with the best learning experience and industry relevant qualifications to 'unlock' your potential and succeed in your chosen career.

WHAT WILL I STUDY?

- Outdoor Activities
- Health and Safety
- Physical Fitness
- Equality and Diversity
- Service Routine
- Land Navigation
- Team work



UNIFORMED PROTECTIVE SERVICES

Whichever uniformed career you are interested in we can help you achieve your dream, from working within Policing, Prison services or Armed Forces, we will help you develop the skills to need to succeed.

WHAT WILL I STUDY?

- Citizenship
- Team work
- Introduction to Criminology
- Physical Preparation
- Behaviour and Disciplines
- Personal Development
- Professional Development
- Planning and Responding
- Outdoor Activities
- Custodial Care
- Government
- Global Affairs
- Expedition
- Fitness

ADULT COURSE ACCESS TO HE IN CRIMINOLOGY AND POLICING

WHAT WILL I STUDY?

- Academic Writing
- Exploring Elements of Crime
- Exploring Perspectives in Psychology
- Aggression
- Powers of Policing
- Research Project
- Conformity and Obedience
- Human Rights
- Reflective Practice
- Intelligence
- Profiling
- Psychological Disorders
- Current issues in Criminology
- Presentation Skills
- Psychology of Criminal Investigate
- Theoretical Approaches to Criminology

Future Careers...

IN PUBLIC SERVICES

The public service sector is ideal for those who want to work in a fast-paced environment, have an interest working frontline supporting the public and have a passion for fitness.

PRISON OFFICER

Prison Officers supervise inmates in prisons, remand centres and young offenders institutions.

Average salary - £30,900*

Day-to-day tasks:

Keep inmates secure, carry out security checks and searches, supervise prisoners and maintain order, support vulnerable prisoners, go with prisoners on external visits like court appearances or hospital appointments, prepare inmates for release through rehabilitation programmes, update records and write reports on prisoners. **

Working environments:

You could work in a prison or correctional facility.

POLICE COMMUNITY SUPPORT OFFICER

Police Community Support Officers work in a neighbourhood policing team to help deal with and prevent crime.

Average salary - £27,100*

Day-to-day tasks:

Go on patrols, offer advice on crime prevention, deal with anti-social behaviour, deliver talks in schools, issue fixed penalty notices, use social media channels to develop links with local communities and provide support at large public events.**

Working environments:

You could work in the community or on a patrol.

In-demand skills that commonly appear in job descriptions for roles within the public service sector include*:

- Communication
- Customer Service
- Management
- Detailed Oriented
- Leadership

*Information from EMSI 2022

**Information from nationalcareers.service.gov.uk



Sport

STRENGTHEN YOUR SKILLS FOR AN ACTIVE AND EXCITING CAREER IN SPORT.

With professional players and industry-experienced coaches, you'll join a winning team with us. Whether you are interested in Sports Therapy and Coaching, Sport and Outdoor Adventurous Activities or Fitness Instructing and Personal Training, we will provide you with the best learning experience and industry-relevant qualifications to unlock your potential and succeed in your chosen career.

Studying with us will provide opportunities for you to learn and train within state-of-the-art sports facilities including a fully equipped commercial sports centre, fitness suite, a full-size football pitch, two astro turf pitches and a sports therapy clinic. We are currently developing an Exercise Science Laboratory and high quality outdoor recreational activities set within the college's 42 acres.

You will also have access to the nearby Manvers boathouse and lake with access to canoeing, open-water swimming, mountain biking, orienteering, windsurfing, sailing and raft building.

As a Sports student, you will be able to join our Dearne Valley Sports Academies and take part in local, regional and national leagues, in addition to Dragon Boat racing and Water Sports Academy at Manvers Lake and Boat House. You will also be able to take part in a range of residential and expeditions, educational visits and events.

PATHWAYS - SPORT

Level 1	Transition to Sport and Public Services
Level 2	Sports Therapy and Outdoor Activities
Level 3	Sports Therapy and Coaching
Level 4/5/6	Bachelor of Science (Hons) in Sport Science (Top-up) (Adult Course)

We offer a range of courses, so you can progress from entry level right up to degree level. You'll gain sought-after skills including sport, nutrition, anatomy and physiology, fitness testing, leadership and much more.

Our expert tutors bring with them real-world experience and passion to their teaching, so what you learn with us is what you'll use in the world of work. You'll also have access to cutting edge equipment including our sports GPS system, timing gates and Hi Cam Telescopic Mast Filming System, for measuring fitness and performance.

WHAT CAREERS OR STUDIES COULD I PROGRESS ON TO?

- Coach
- Sports Scientist
- Sport Management
- PE Teacher



Sport

TRANSITION TO SPORT AND PUBLIC SERVICES

This course is designed for those interested in a career in sport and public services sectors. As part of this course, you will acquire and develop generic, transferable and career specific skills to complete tasks and demonstrate a level of achievement that enables your progression.

You will complete a range of sport and public service-related units, study an appropriate English and maths qualification and develop transferable employability and communication skills.

WHAT WILL I STUDY?

- College induction
- Assertiveness and Decision Making
- Healthy Living
- Group and Team work
- Health and Safety in Practical Environment
- Improve Own Learning
- Personal Development
- Sports Activity
- Law and Order
- Research Skills
- Presentation Skills

SPORT, THERAPY AND OUTDOOR ACTIVITIES

Whether you are interested in Sport Therapy and Coaching or Sport and Outdoor Adventurous Activities or Fitness Instructing and Personal Training, we will provide you with the best learning experience and industry relevant qualifications to 'unlock' your potential and succeed in your chosen career.

WHAT WILL I STUDY?

- Introduction to Health and Exercise
- Sport Massage
- Sport Injuries
- Participation
- Outdoor Activities
- Sports Coaching

UNIFORMS

You may be required to purchase outdoor kit including a polo neck t-shirt and shorts and/or tracksuit bottoms for your practical and work placements as well as the relevant work books to support your studies.

ENGLISH AND MATHS

If you haven't achieved GCSE English and maths at grades 4 or above you will undertake these qualifications alongside your main programme.



SPORT THERAPY AND COACHING

Is your dream career to work within Sport Therapy and Coaching? Would you like to develop your skills within health and wellbeing and learn how to train others?

With our Sport Therapy and Coaching course you will be able to further your potential to achieve this.

WHAT WILL I STUDY?

- Anatomy and Physiology
- Coaching
- Health and Wellbeing
- Self-Employment
- Fitness Training
- Research Methods
- Sport Massage
- Sport Injuries



Future Careers...

IN SPORT

The sports sector is ideal for those who have a passion for fitness and wish to share that drive with others.

SPORTS DEVELOPMENT OFFICER

Sports Development Officers organise projects and training to encourage people to take part in sport and have a healthier lifestyle.

Average salary - £24,000**

Day-to-day tasks:

Find and train staff, coaches and volunteers for projects, promote and run projects and activities, monitor and evaluate projects, find funding, manage resources and budgets, put local and national policies into practice, attend meetings, seminars and conferences and coach or supervise sports activities.**

Working environments:

You could work in an office, at a school, on a sports field, at a fitness centre or at a college.

OUTDOOR ACTIVITIES INSTRUCTOR

Outdoor Activities Instructors lead trips and teach skills in activities like hill walking, climbing, canoeing, skiing and snowboarding.

Average salary - £23,000**

Day-to-day tasks:

Plan and prepare activities, explain, advise on and demonstrate activities, instruct in specialist areas like sailing or climbing, make sure all equipment and facilities are safe and explain safety procedures.**

Working environments:

At an activities centre or in the countryside.

In-demand skills that commonly appear in job descriptions for roles within the sport sector include*:

- Communication
- Customer Service
- Enthusiasm
- Management
- Leadership

*Information from EMSI 2022

**Information from nationalcareers.service.gov.uk

Careers Index

If you have a dream job or career in mind, you can find progression routes to the below professions on their corresponding page numbers.

ANIMAL CARE PAGE 36

- Animal Care Assistant
- Animal Technician
- Assistant Zookeeper
- Kennel Assistant
- Livestock Manager
- Pet Store Manager
- Rescue Centre Manager

CONSTRUCTION TRADES PAGE 60

- Bricklayer
- Carpenter
- Construction Manager
- Domestic Heating Engineer
- Electrician
- Kitchen Fitter
- Labourer
- Plasterer
- Plumber
- Shop Fitter

MOTOR VEHICLE PAGE 70

- Motor Vehicle Fitter
- Technical Engineer
- Vehicle Technician
- Welder

ESPORT PAGE 78

- Admin
- Broadcaster
- Coach
- Cyber Security Analyst
- Event Manager
- Finance Manager
- Journalist
- Events Host
- Professional Player
- Social Media Manager

HEALTH AND SCIENCE PAGE 84

- Care Worker
- Clinical Support Worker
- Health Care Assistant
- Health Visitor
- Midwife
- Nurse
- Paramedic
- Physiotherapy Assistant
- Radiographer
- Social Worker

HORTICULTURE, CONSERVATION AND LAND MANAGEMENT PAGE 46

- Ground Worker
- Junior Ranger
- Landscape Gardener
- Livestock Manager

PUBLIC SERVICES PAGE 100

- Army Officer
- Border Force Officer
- Coastguard
- Firefighter
- Mountain Rescue
- Police Officer
- Prison Officer
- Ranger
- Royal Navy Officer
- Youth Leader

SPA AND HOLISTIC THERAPIES PAGE 94

- Barbering
- Beauty Therapist
- Cosmetic Retail Assistant
- Hairdresser
- Hair Extension Specialist
- Hair Salon Manager
- Make-up Artist
- Massage Therapist
- Nail Technician
- Theatre and Film Artist

SPORT PAGE 106

- Gym Instructor
- Leisure Manager
- Outdoor Activity Instructor
- Performance Coach
- Personal Trainer
- Sports Coach
- Sport Therapist
- Sports Development Assistant
- Sports Nutritionist

Travelling to College

**WE ARE EASILY ACCESSIBLE
BY BUS, TRAIN AND CAR.**



TRAVELLING TO US...

BY BUS

Our colleges are close to many bus routes across South Yorkshire.

Rotherham Interchange bus station, which is conveniently located close to our town centre campus, also provides great travel access to and from surrounding areas.

The Traveline journey planner can help you plan a route and get information about public transport services: **traveline.info**

We also run a college bus service, which you can view on the next page.

BY TRAIN

Rotherham College is located a short walk from Rotherham Central train station (RMC). Rotherham Central also operates a tram-train service between Sheffield City Centre and Rotherham.

The closest train station to Dearne Valley College are Bolton-upon-Dearne (BTD), Mexborough (MEX) and Swinton (SWN).

If you travel a lot by train you could benefit from a railcard.

A 16-17 saver railcard gets you 50% off standard anytime, off peak, advance and season tickets. It is just £30 and is valid for one year or until your 18th birthday, whichever comes first. For more information visit **16-17saver.co.uk**

A 16-25 railcard can get you 1/3 off rail travel for everyone aged 16-25 for just £30 for one year or £70 for three years. For more information visit **16-25railcard.co.uk**

Mature students can also apply for a one-year railcard, which can be extended with evidence of continuing to study every year.

BY CAR

A number of public car parks are located within easy walking distance of Rotherham College and the Construction Centre including Drummond Street and Percy Street.

Dearne Valley College offers free car parking for students and visitors.

TRAVEL PASSES

There are free travel passes available to students, offering cheaper fares on public transport networks in South Yorkshire.

The 16-18 travel pass allows young people to travel on buses and trams for as little as 80p per journey and half-fare travel on Northern trains. Passes are valid all year round for up to two years.

There are also 18-21 passes available to those who live in South Yorkshire which also offer 80p travel in South Yorkshire to those aged 18 to 21.

Applications for a travel pass can be made online at:

travelsouthyorkshire.com/1618

There are tickets available for fares in South Yorkshire that range from 1, 7, 28 day or annual period to make travelling to college cheaper.

If you are aged over 18, an 18-22 card is available regardless of where you live, for travel in South Yorkshire. The card offers 15% off the price of 1, 7 or 28 day TravelMaster tickets.

Student Bus Service

HOP ON BOARD!

We have a number of student only bus routes making it easier to get to Rotherham College and Dearne Valley College from a range of areas.

Each service will run first thing in the morning getting you into College for your first lesson and will return at the end of the College day.

There is a small charge per day or multiple travel passes can be purchased for a discounted price.

You may be eligible for funding to pay for your journey to and from College, more information on Financial Support can be found on page 28-29.

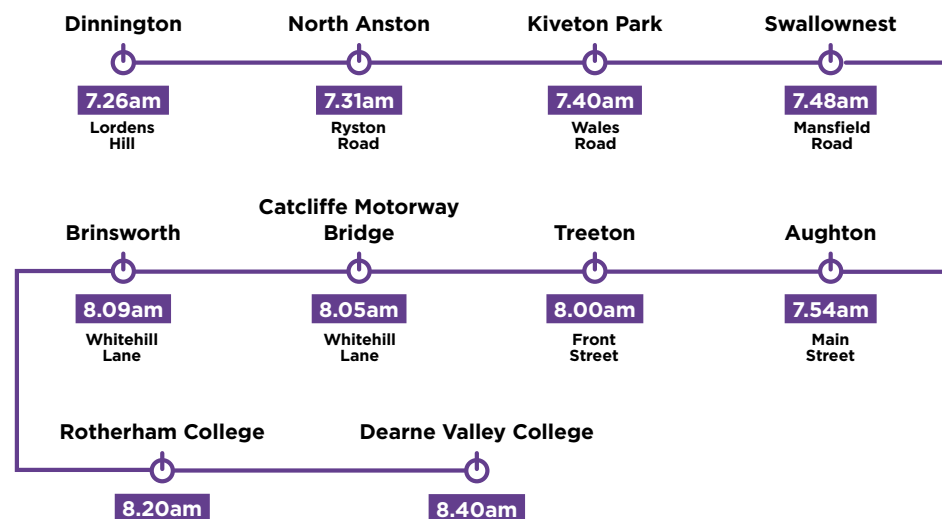
For more information on our Student Bus Service and details on how to book once you have enrolled, please visit:

rotherham.ac.uk/information/student-support/student-bus-service

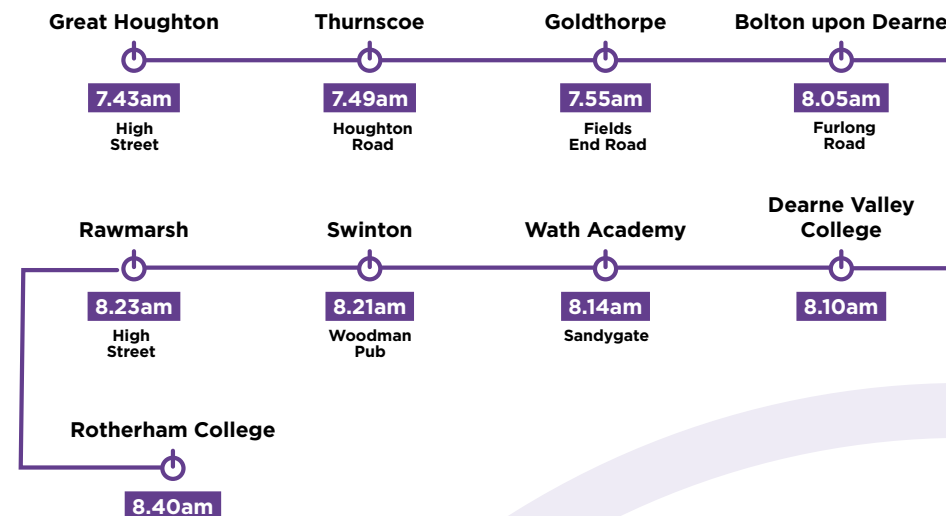
dearne-coll.ac.uk/information/student-support/student-bus-service

Please note our bus timetables are subject to change. Check our websites for the most up to date information.

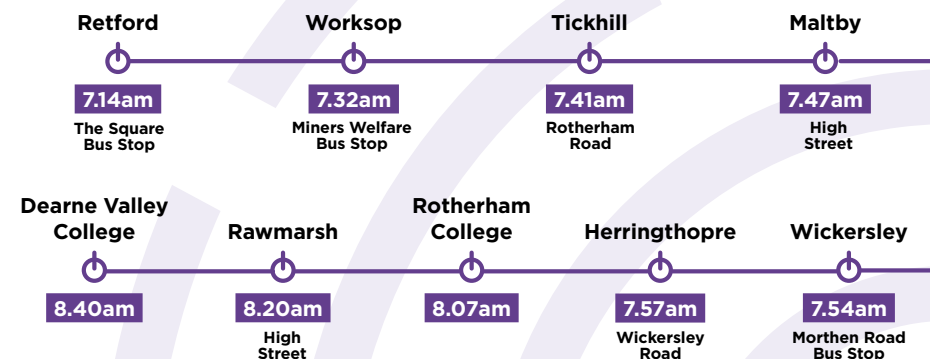
DINNINGTON - ROTHERHAM COLLEGE - DEARNE VALLEY COLLEGE



GREAT HOUGHTON - DEARNE VALLEY COLLEGE - ROTHERHAM COLLEGE



RETFORD - ROTHERHAM COLLEGE - DEARNE VALLEY COLLEGE



Commercial Outlets

AT DEARNE VALLEY COLLEGE

HAIR AND BEAUTY SALON

The Salon at Dearne Valley College offers a comprehensive range of luxury hair and beauty therapy treatments and services designed to leave you feeling suitably pampered to perfection, within a peaceful and tranquil setting.

Pamper yourself with our comprehensive range of luxury hair and beauty therapy treatments in a peaceful and tranquil salon setting.

01709 513118

hairandbeauty@dearne-coll.ac.uk

dearne-coll.ac.uk/about/our-facilities/aspirations-salon



THE FARM SHOP

At Dearne Valley College, we have our very own on-site farm shop that is fully stocked with ethically sourced products produced by local businesses and the students themselves.

Shop local! Our on-site shop stocks a huge range of locally sourced produce including eggs from hens farmed on-site as well as veg boxes containing locally grown salad and other vegetables. We also sell a range of products made by the College students themselves including sweets and Dog Treat bags.

collegeco-operative@rnngroup.ac.uk

FITNESS 63 AND DVC SPORTS

With newly refurbished AstroTurf pitches, an on site gym and sports hall, we are fully kitted out with the latest fitness machines and equipment.

Discounted memberships are available to students. Students also have access to the Manvers Lake offering a range of water sports and activities.

01709 513315

dvcsports@dearne-coll.ac.uk

dvcsports.co.uk



Commercial Outlets

AT NORTH NOTTS COLLEGE

HAIR AND BEAUTY SALON

North Notts College's salon offers a premium salon experience at an affordable price.

Kitted out with state-of-the-art equipment, with the calibre to match any high street salon, our hair, beauty and make-up salons are the perfect destination for some well-earned 'me time'.

01909 504501

nnc.ac.uk/insync



We're proud to say that healthy, happy hair is something of a passion of ours, so your locks are in very good hands.

We believe that the enthusiasm and creativity of our students combined with the experience of the highly qualified tutors is what makes us a cut above the rest.

An extensive list of beauty treatments are also available so there's no excuse not to spoil yourself with a new set of nails, indulge in a facial treatment or treat yourself to a professional makeover.



Commercial Outlets

AT ROTHERHAM COLLEGE

REFINE YOUR SKILLS IN REALISTIC WORKING ENVIRONMENTS

In our on-site commercial outlets, students can put their passion into practice by working with real customers in real working environments.

You can also visit any one of our outlets as a customer - whether you're getting your nails done, grabbing some gourmet grub or exercising in one of our state of the art fitness areas, there is something for everyone - at a fantastic, discounted price.

HAIR AND BEAUTY SALON

Rotherham College's salon offers a premium salon experience at an affordable price.

Kitted out with state-of-the-art equipment, our hair, beauty and make-up salons are the perfect destination to treat yourself at a fraction of the cost.

01709 722776

inspire@rotherham.ac.uk

inspire.rotherham.ac.uk



THE WHARNCLIFFE

Pop into our fantastic on-site restaurant to refresh yourself with a morning coffee, unwind with friends for a relaxing drink or even enjoy a delicious three course meal.

Operating as Rotherham College's training restaurant, The Wharncliffe has an excellent reputation for outstanding food and service, provided by our learners under the watchful eye of their tutors.

01709 722767

thewharncliffe.co.uk



STUDIO THEATRE

Enjoy a play, panto, or music concert at our College Studio Theatre, performed by our students or external companies.

Whether you're looking for some light-hearted fun or the next cutting-edge drama, the Studio Theatre accommodates for all interests with a calendar brimming with events. Encompassing a diverse range of performing arts genres, the Theatre is equipped with the industry-standard facilities needed to create an immersive experience for its audience.

01709 722721

theatre@rotherham.ac.uk



Rotherham College

YOUR CAMPUS

Based in the heart of Rotherham's town centre, we specialise in providing career-focused training and education. We have industry-standard facilities and courses which are designed alongside local employers so that you can learn the most sought after skills required within your chosen industry and start your career a step ahead.

We serve a variety of local communities and provide an easy-to-use student bus service. Studying in the centre of town also gives the opportunity to have fun with your new peers, through exploring local cafes, shops and social spaces.

STUDY WITH US

Our courses include a variety of levels to suit all abilities - from entry-level to degree-level - as well as a range of apprenticeships.

You can choose from a wide range of subjects including:

- Art, Graphic Design and Fashion
- Business, Retail and Tourism
- Catering and Hospitality
- Computing and Digital
- Construction (Bricklaying, Carpentry and Joinery, Plumbing and Electrical)
- Education and Childcare Services
- Engineering
- English and Maths
- English for Speakers of Other Languages (ESOL)
- FLEX - Dedicated department for students with Special Educational Needs
- Games Animation
- Hair and Beauty
- Health and Social Care
- Media Make-up
- Media and Photography
- Music
- Performing Arts

APPRENTICESHIPS

Many of these courses are offered as apprenticeships, which you can find at **rotherham.ac.uk/apprenticeships**.

Apprenticeships are a great way to earn while you learn, as well as being a fantastic opportunity if you are more of a hands-on learner. Whether you stay within the company after your apprenticeship, or move on to somewhere new, it is an easy way to get your foot in the door in a well-paid career. More information is provided on pages 18-19.

YOUR FACILITIES

Our courses are delivered within industry-standard facilities, which allows students to develop practical experience preparing them to thrive in their chosen career. Learning within these environments will ensure you are workplace ready and allow you to:

- Build confidence and perfect your performance within our in-house theatre
- Prepare for a culinary career in our commercial training restaurant, The Wharnccliffe
- Hone your hairdressing, beauty therapy and nails skills in our commercial on-site training salon, Inspire
- Build foundations for a successful career in bricklaying, joinery, plumbing or electrical installation, some of which are housed in our dedicated construction centre

As well as excellent courses and learning facilities, we offer plenty of spaces for you to relax and socialise with friends. There are two on-site cafes serving a wide range of food and drinks (including Starbucks), and a theatre where you can watch our music and performing arts students put on shows and perfect their craft. The town centre also has a local market and plenty of independent shops and cafes to explore.

HELPING YOU SUCCEED

All courses are delivered by specialist tutors, many of which have worked or still work in the industry they teach. They bring invaluable expert knowledge and a breadth of experience to their teaching, and a passion for the development and achievements of their students.

We work extensively with employers within key industries to ensure our courses meet local and regional skill needs. This not only means students are equipped with the skills employers are looking for when they finish college, but also offers them the opportunity for work experience and potential future employment.

As well as plenty of support to launch your dream career, we provide a direct pathway to Higher Education at University Centre Rotherham (UCR), also part of the RNN Group, for those interested in studying a degree close to home with familiar tutors. UCR is a dedicated university centre offering degree-level courses and professional training to the local community of Rotherham.

For more information about Rotherham College, please visit rotherham.ac.uk

North Notts College

HANDS-ON LEARNING IN THE HEART OF WORKSOP AND RETFORD.

At North Notts College, what you learn is what you'll use. Every year, our technical courses and apprenticeships help to educate, develop and prepare thousands of local people to achieve their dreams.

YOUR CHOICE

Our courses and apprenticeships are designed together with local employers to make sure that whatever your dream career is, we'll make sure you're prepared. Choose from a wide range of subjects including:

- Business
- Computing
- Construction
- Education and Childcare Services
- Engineering
- English and Maths
- FLEX - Dedicated department for students with Special Educational Needs
- Hair and Beauty
- Health and Social Care
- Media Make-up
- Motor Vehicle
- Public Services
- Sport

YOUR FACILITIES

Across our three campuses in the heart of Worksop and Retford, we take learning beyond the classroom. Our main campus in Worksop is just a five minute walk from the train station and offers engaging learning environments such as our Hair and Beauty salon (open to members of the public), our purpose-built construction workshops, kitted out with all the tools you need to succeed and our state-of-the-art gym.

The Retford Education Centre, our second campus, provides our students with the perfect space to develop. Here, we provide courses in Media Make-up and Sport, where our students have access to cutting-edge equipment and spacious facilities.

Located in Worksop town centre is our Bridge Skills Hub campus, where we deliver Higher-Level qualifications alongside our sister university, University Centre Rotherham. To find out more about higher-level qualifications in the heart of Bassetlaw, please visit

nnc.ac.uk/bridge-skills-hub

UNSURE ABOUT YOUR NEXT STEP?

Check out page 12 to read up on the different benefits with Technical courses, Apprenticeships and T Levels

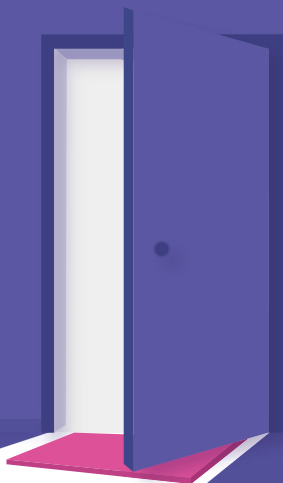
For more information about North Notts College, please visit: nnc.ac.uk



Degrees on your Doorstep

**University Centre Rotherham
is just a short journey away!**

Find out more:
Pick up a prospectus at reception
Visit ucr.rotherham.ac.uk



UCR University
Centre
Rotherham
PART OF RNN GROUP

STUDY *Smart, Local*

WHO ARE WE?

At University Centre Rotherham, we offer full and part-time higher-level and degree courses in the heart of Rotherham and at our partner college sites across South Yorkshire and North Nottinghamshire.

The Bridge Skills Hub, in the centre of Worksop, also offers several of our Higher Education courses. To find out more, refer to our website.

We're part of the RNN Group alongside Rotherham College, North Notts College, Dearne Valley College and a number of other subsidiary training organisations.

WHAT DO WE BELIEVE IN?

Your professional and personal fulfilment is at the heart of everything we do. Whether you're continuing your studies, changing career path, or returning to education, we're here to help you succeed.

WHAT CAN YOU EXPECT?

Studying with us is a rewarding and fun learning experience which is all about you. By studying a higher-level qualification on your doorstep you will have access to:

- State-of-the-art facilities
- Industry-experienced staff
- Lower fees
- Fantastic student experience
- Small, friendly community
- Degrees accredited by top universities
- A supportive and caring learning environment
- Flexible learning



OPEN EVENTS

Our Open Events are access all areas to give a real feel for what University Centre Rotherham offers for your next steps into Higher Education. Visitors can tour our campus and fantastic facilities, meet our support staff, Student Ambassadors and speak to our industry-experienced tutors from every department area.

VISIT US:

Saturday 18th November 2023
10.00am - 12.00pm

Saturday 27th January 2024
10.00am - 12.00pm

Wednesday 1st May 2024
3.00pm - 6.00pm

Saturday 16th November 2024
10.00am - 12.00pm

To book a place at an event please visit: ucr.rotherham.ac.uk/open-events
You can also visit our on-demand Open Event website at:
ucreevents.rotherham.ac.uk

Bridge Skills Hub

HIGHER EDUCATION (HE) COURSES IN THE HEART OF WORKSOP.

North Notts College delivers a variety of Higher Education (HE) courses at The Bridge Skills Hub

OUR COURSES

Whether you are looking to switch careers, retrain, or further your education, our committed tutors will be there to help you every step of the way. With courses from level 3 up to level 6, The Bridge is the perfect place to begin your university education.

Our degree courses are accredited by top universities, meaning you can access the same high-quality education, without having to pay travel or accommodation expenses! We boast strong industry links in the local area and this is reflected in the diversity of the courses we have on offer across health, childcare, and business.

OUR FACILITIES

The state-of-the-art Education Centre is kitted out with the latest technology and equipment. It houses six classrooms, several breakout spaces, private offices, an auditorium, two clinical teaching rooms, and its very own clinical suite and mock ward.

These facilities offer students exposure to real-world environments while providing a safe space for learning.



CASE STUDY

Nigel Kajan

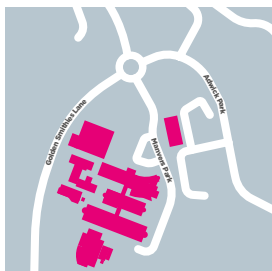
Access to HE - Health Science Professions

“Dearne Valley College is a great place to study and the tutors are incredibly supportive and friendly. After I complete my course, I plan to progress to Higher Education.”

.....

HOW TO Find us

DEARNE VALLEY COLLEGE



Manvers Campus
Manvers Park
Wath-upon-Dearne
Rotherham
S63 7EW

ROTHERHAM COLLEGE



Town Centre Campus
Eastwood Lane
Rotherham
S65 1EG

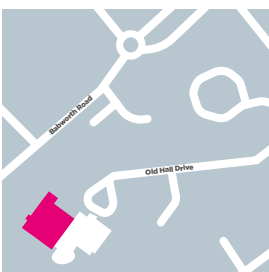


Construction Centre
Unit 1-3 Amber Court
Rawmarsh Road
Rotherham
S60 1RU

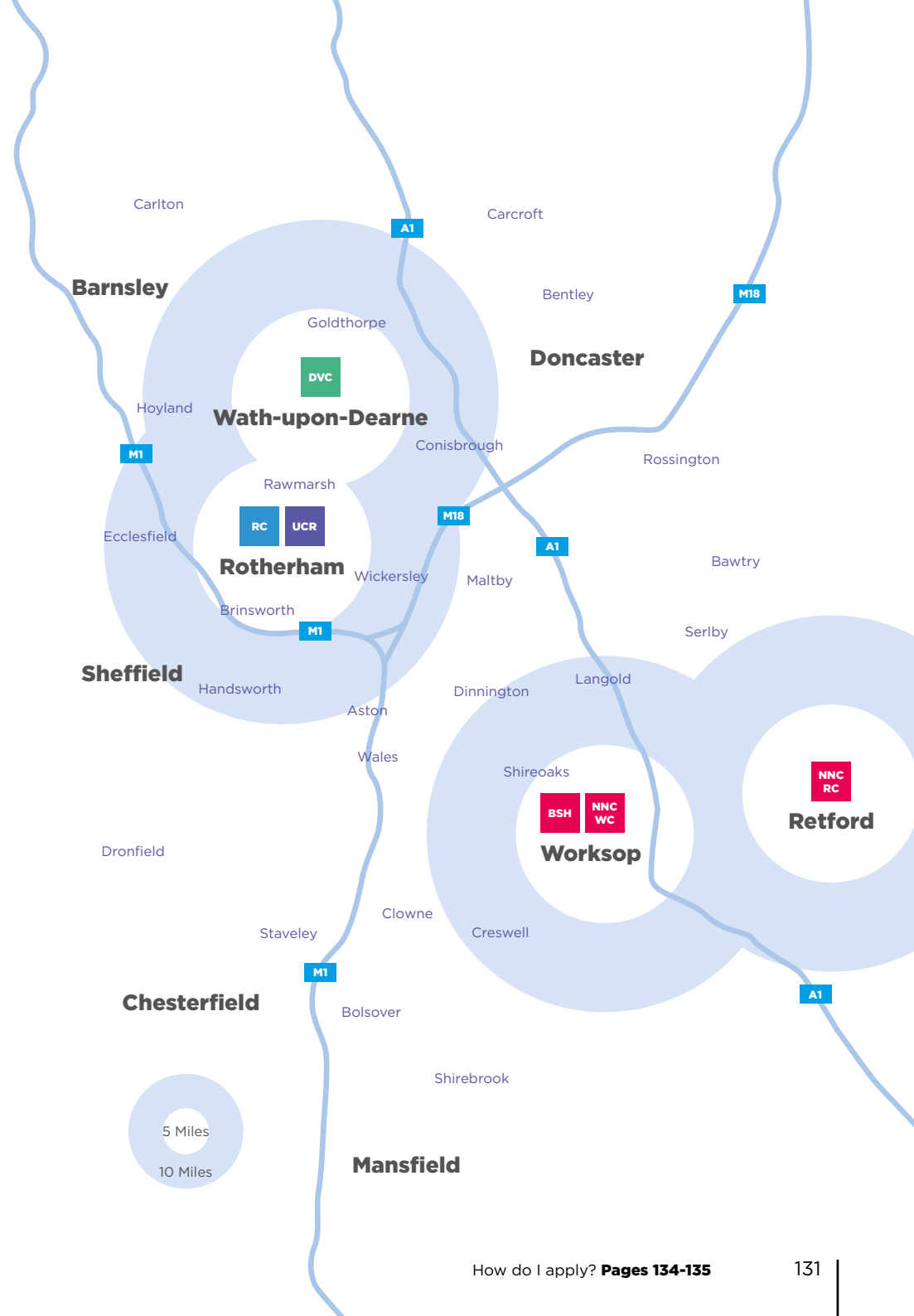
NORTH NOTTS COLLEGE



Worksop Campus
Carlton Road
Worksop
S81 7HP



Retford Campus
Old Hall Drive
Retford
DN22 7EA



Open Events

EXPLORE OUR CAMPUS AND FIND OUT
MORE ABOUT THE BENEFITS OF STUDYING
WITH US AT ONE OF OUR OPEN EVENTS.



DEARNE VALLEY COLLEGE

Saturday 25th November 2023

10.00am - 12.00pm

Saturday 3rd February 2024

10.00am - 12.00pm

Saturday 23rd March 2024

10.00am - 12.00pm

WE INVITE YOU TO:

- Learn more about our wide range of courses
- Meet our industry-experienced tutors
- Speak to our Student Ambassadors about their experience at college
- Explore your career options
- Attend tours of our industry-standard facilities
- Get a feel for the courses available with our interactive demos
- Ask any questions and make an application



DEARNE VALLEY
COLLEGE

GET IN TOUCH

www.dearne-coll.ac.uk

01709 513355



@DearneValleyCollege



@dvcollege



@DVCollege

INTERESTED IN ATTENDING?

To pre-register please visit:

dearne-coll.ac.uk/open-events

CAN'T ATTEND AN EVENT?

We are always happy to talk with you about your future. We can provide tours of our facilities and individual talks to assist with your decision making.

Arrange a visit by contacting:

schoolevents@rnngroup.ac.uk

You can also find lots of useful information on our on-demand Open Event websites, including our tutors speaking about their subject specialisms at:

events.dearne-coll.ac.uk

How to Apply

Use our checklist to complete your application and start your College journey.

1. RESEARCH

- ☐ Identify subjects you find interesting in our course guide
- ☐ Visit our websites for useful information and to explore your career options
- ☐ Come along to an Open Event to meet our Tutors and get a feel for our college campus (See page 29)

If you would like a more personalised visit, please email schoolevents@rnngroup.ac.uk

2. APPLY

- ☐ The quickest way to apply is online via our website:
Dearne Valley College:
dearne-coll.ac.uk/apply-now

Once we receive your application you will get a confirmation email. Within five days you will receive login details to the online Admissions Manager where you can track the progress of your application.

Please include your personal email address and mobile number and update us of any changes so that we can keep in touch with you.

3. ATTEND

- ☐ You will be invited to attend an interview to ensure that the course is right for you
- ☐ If you have stated you have any learning needs we will also invite you in for an Additional Learning Support assessment

Note: Some courses may require you to bring a portfolio of work and/or audition as part of the interview process.

4. ENROL

- ☐ When you have received your exam results in August you will be sent an email to enrol online
- ☐ You will also be invited in to complete your enrolment process by bringing in your GCSE certificates. You will receive your college badge, start date and timetable ready for September



CONTACT US

We are here to support you:

Our Learner Recruitment Team can provide more course information, assistance when completing your application and support you with any unexpected exam results. To change any details on your application (including your course) you don't need to complete another form, simply contact us or visit our campus.

Dearne Valley College

01709 513355
learn@dearne-coll.ac.uk

Manvers Park
Wath-upon-Dearne
S63 7EW

OPEN EVENTS

Saturday 25th November 2023

10.00am-12.00pm

Saturday 3rd February 2024

10.00am-12.00pm

Saturday 23rd March 2024

10.00am-12.00pm

Wednesday 12th June 2024

3.30pm-6.30pm

Pre-register at:

dearne-coll.ac.uk/about/events



Scan here to
register for one of
our open events.



**Rotherham College
North Notts College
Dearne Valley College**

Part of
RNN GROUP



These courses may
be funded through



**Education & Skills
Funding Agency**